

NORIX

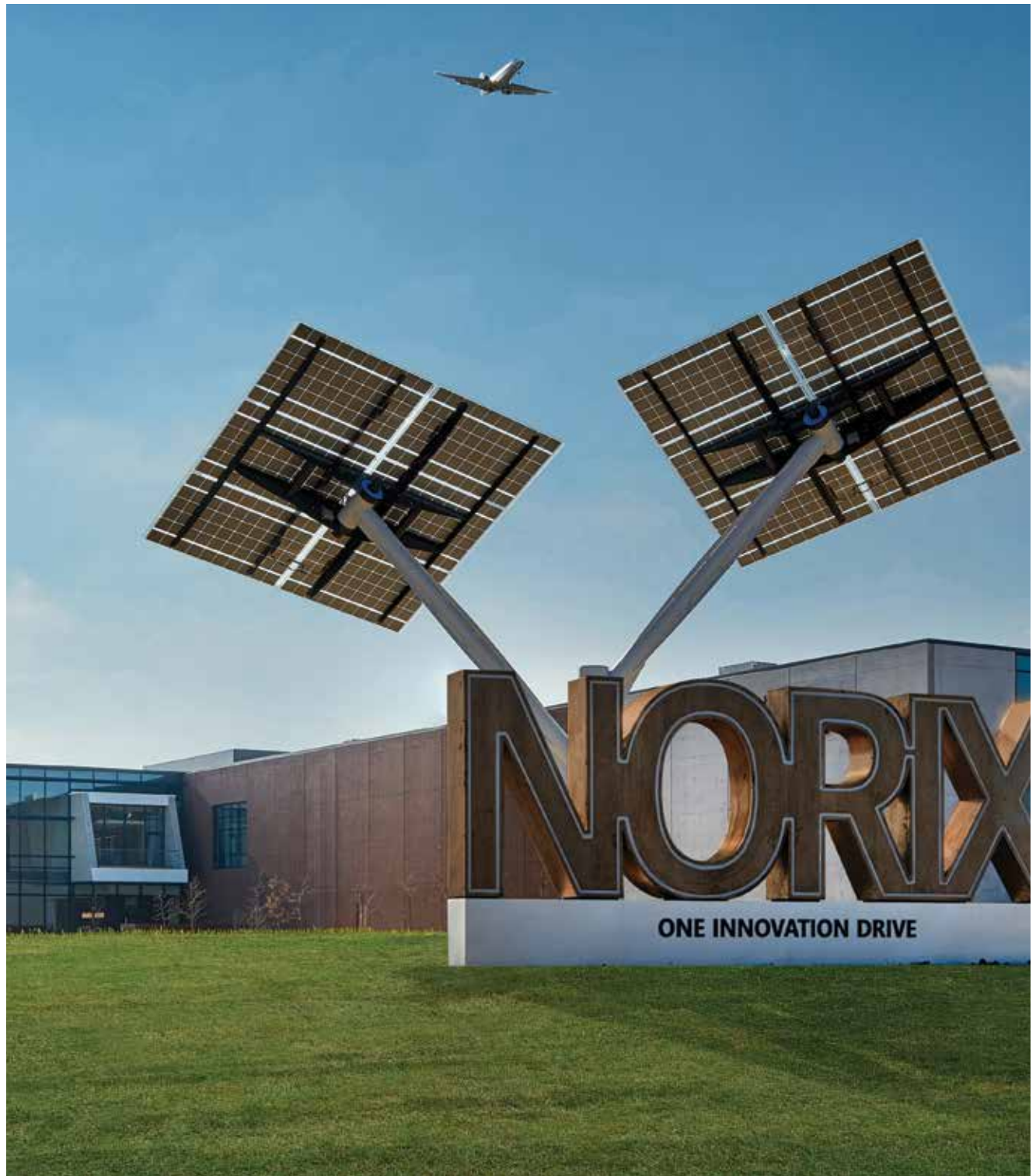


CATALOG

At the intersection of Innovation Drive and Ingenuity Way.

Norix® headquarters at One Innovation Drive mirrors the same design fundamentals as our products – cutting-edge in its function and aesthetic design. The Norix® headquarters is a unique structure built to achieve the distinguished LEED-Gold Certification.

The most visible effort in obtaining LEED-Gold Certification is the massive investment in solar power, as seen on the roof and throughout the campus on “solar trees.” The solar panels collect approximately 90% of Norix® electrical usage.

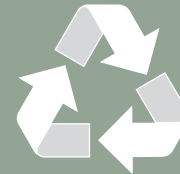




WE BUILD FOR TOMORROW



**MADE IN THE
USA**



**MADE WITH
RECYCLED
CONTENT**



**RECYCLABLE
PRODUCT**



GREENGUARD

PRODUCT CERTIFIED FOR
LOW CHEMICAL EMISSIONS
UL.COM/GG
UL 2818

GOLD



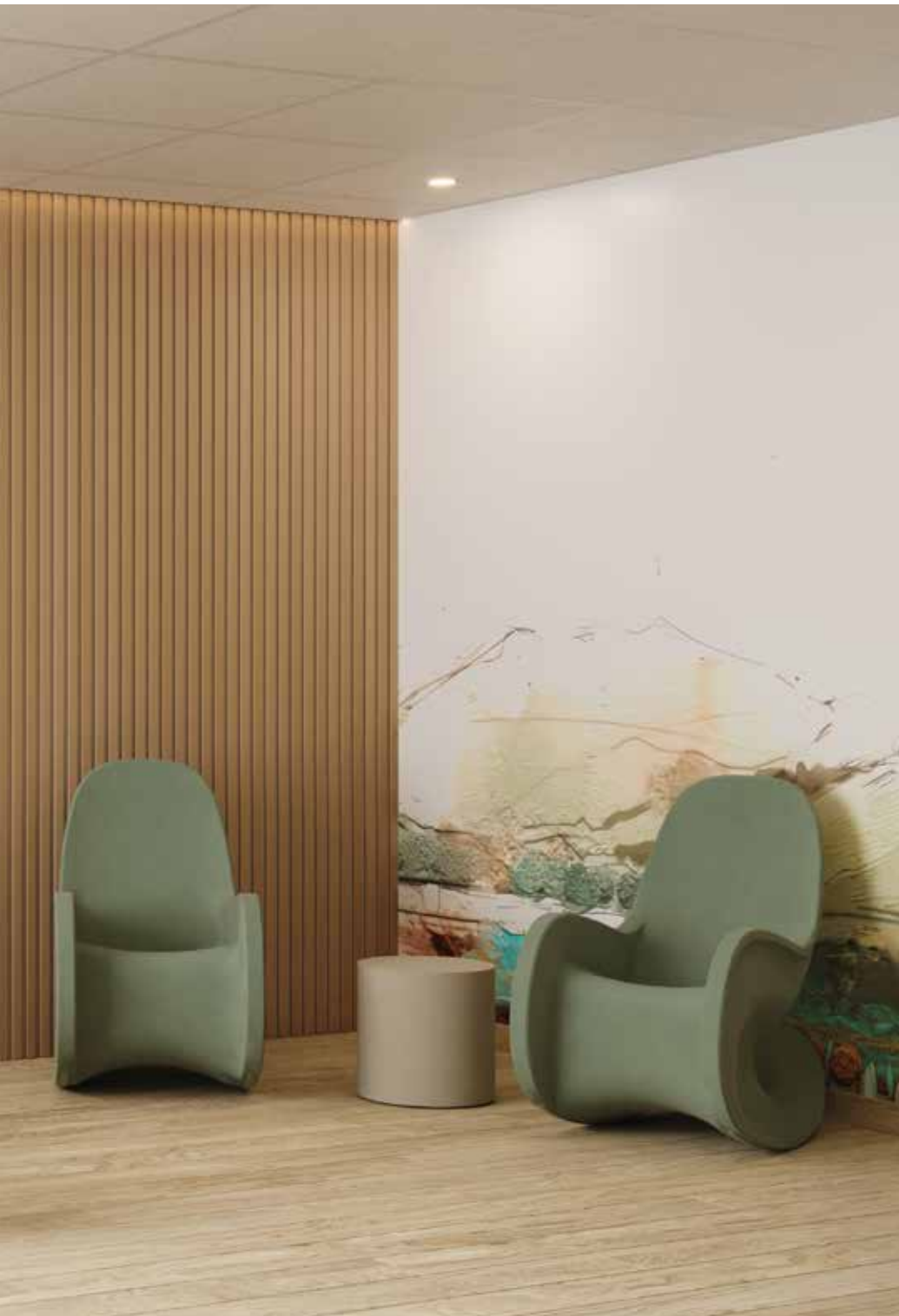
TruColor™

**COLOR
COMPOUNDING
TECHNOLOGY**



TruGrain™

**PROPRIETARY
WOOD GRAIN
TECHNOLOGY**



NATURALS PALETTE

The colors from our Naturals Palette have been carefully selected to support a therapeutic environment that helps reduce tension, assists in behavior modification and enhance the safety of both residents and staff.

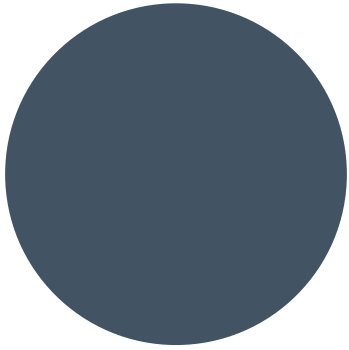
Research indicates that interiors with an interesting use of color can provide the following:

- Balance the mental equilibrium of residents
- Reduce behavioral discord
- Promote dignity
- Encourage socialization
- Enable rest and recovery
- Improve resident and staff morale

When applied with understanding and purpose, color can be used to promote self-confidence, uplift the spirit, soothe the psyche and be a positive distraction among residents. The colors in the Natural Palette have shown to address three primary human elements:

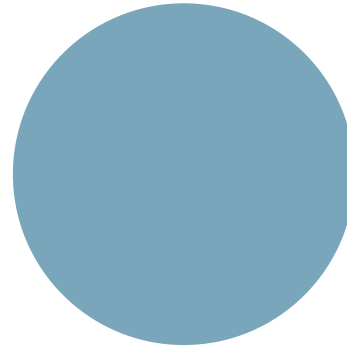
- Familiarity – A sense of connection with the outside world.
- Stress Reduction – Calming and lifting the human spirit.
- Morale Improvement – Humanizing and supporting a feeling of normality.

Each color in the Naturals Palette is designed to work together to deliver a seamless transition from room to room and promote a sense of health, well-being and sustainability throughout the entire facility.



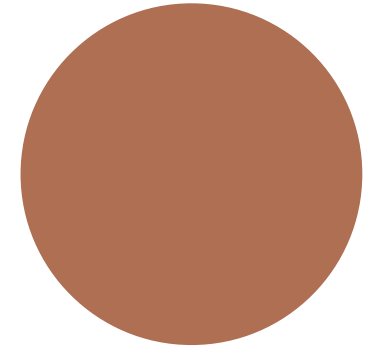
TWILIGHT

Peaceful, tranquil and thoughtful. A quiet lake, a distant mountain. A comforting neutral that partners well with others to create depth or act as a soft contrast. It promotes mental stability while relaxing the mind and body.



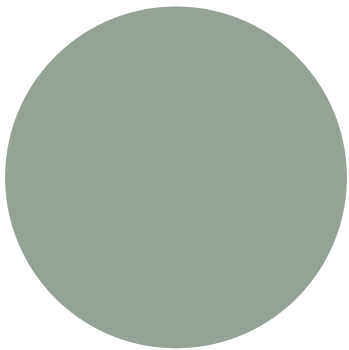
COVE

Crisp, cool and refreshing. Clear coastal skies, a calm marina. It's the perfect partner for all palettes. It stimulates clear thoughts and heightens concentration.



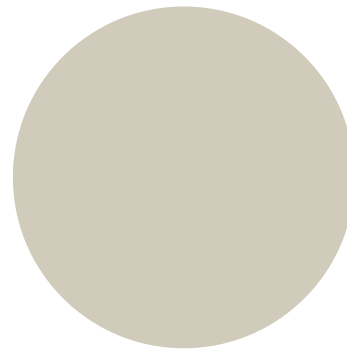
CLAY

Rustic, grounding and stable. The color of sundried soil, cocoa, and terracotta. A foundational neutral that pairs well with other color options. It's warm, welcoming and inspires optimism.



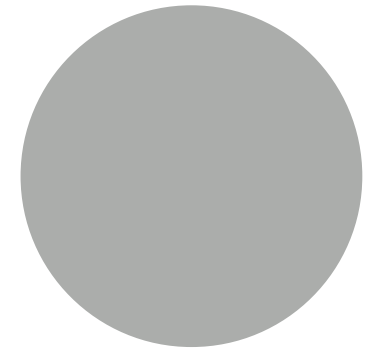
SAGE

Organic, floral and natural. A morning dew, a foggy northern forest. A balanced tone that is an ideal complement to every color. Its calming properties help to diffuse anxiety and soothe the mind.



SAND

Timeless, everlasting and refined. The color of stone and sand. Subtle, yet strong, it allows other colors and materials to take center stage. It offers structure and strength.



DOVE

Reliable, practical and versatile. The color of feathers, pebbles, and weathered wood. A strong neutral with an honest voice. It conveys a sense of balance and stability.

WE

BELIEVE

IN GETTING THINGS DONE. WE ARE A PERFORMANCE ENGINE.

IN PROBLEM SOLVING. WE SEEK TO INNOVATE IN EVERYTHING WE DO.

IN BEING EARNEST. WE TAKE OUR WORK WITH THE SERIOUSNESS IT DEMANDS.

IN LEADING OUR INDUSTRY. WE EMBRACE A GROWTH-MINDSET AND STRIVE TO BE THE BEST.

IN TAKING CARE OF PEOPLE. WE TAKE CARE OF OUR EMPLOYEES AND OUR PRODUCTS HELP KEEP PEOPLE SAFE.

CONTENTS

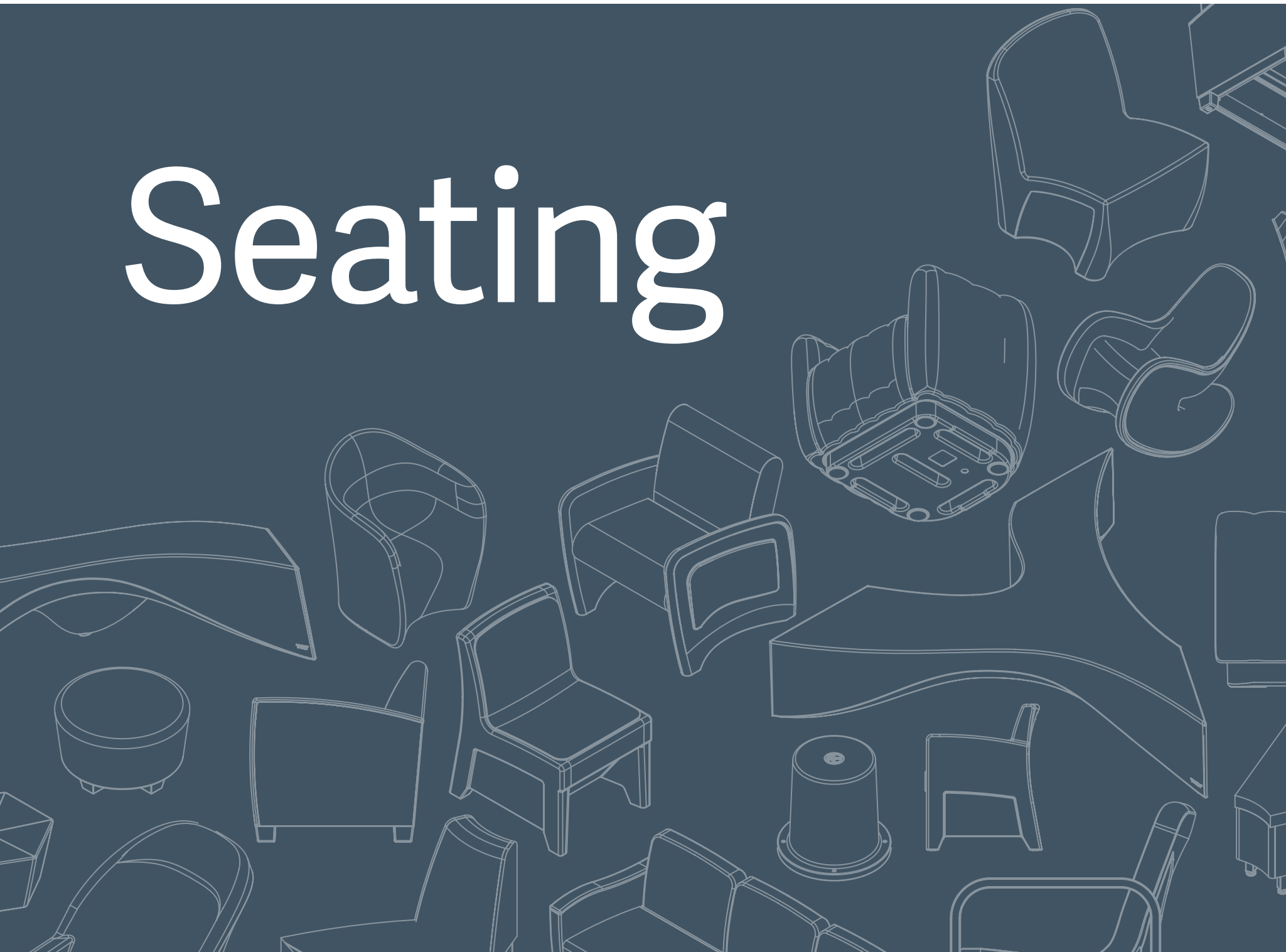
AT NORIX®,
WE DESIGN
INNOVATIVE,
ROBUST
FURNITURE
THAT MEETS THE
REAL-WORLD
NEED FOR
HUMANIZING
CHALLENGING
ENVIRONMENTS.





- 10** Seating
- 72** Tables
- 98** Bedroom Furniture
- 118** Mattresses
- 126** Kids
- 128** Mirrors
- 130** Storage
- 132** Accessories

Seating







AFFINITY SEATING COLLECTION

Blending a traditionally simple design with unmatched durability, Affinity is an excellent choice for any area. Available with or without arms, and optional upholstered or wood back. The versatile design lends itself well to lobbies, meeting spaces, and dining areas.



FINISHES

WOOD BACK

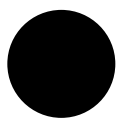


MAPLE



WALNUT

ARM CAPS



BLACK

FRAME

METALLIC
SILVER

Affinity
Arm Chair
Upholstered Back

Seat Height	17.4"
Arm Height	26"
Overall Height	32.1-32.5"
Seat Width	18.5"
Overall Width	23.4"
Depth	22.8"
Weight	20 lbs.



Affinity
Arm Chair
Wood Back

Seat Height	17.4"
Arm Height	26"
Overall Height	32.1-32.5"
Seat Width	18.5"
Overall Width	23.4"
Depth	22.8"
Weight	20 lbs.



Affinity
Armless Chair
Upholstered Back

Seat Height	17.4"
Overall Height	32.1-32.5"
Seat Width	18.5"
Overall Width	20.3"
Depth	22.8"
Weight	20 lbs.



Affinity
Armless Chair
Wood Back

Seat Height	17.4"
Overall Height	32.1-32.5"
Seat Width	18.5"
Overall Width	20.3"
Depth	22.8"
Weight	20 lbs.

FEATURES

Stackable

Save space & make storage easy.

Field-Replaceable Cushions

Refresh your seating quickly & easily without requiring a full chair replacement.

Concealed Staples

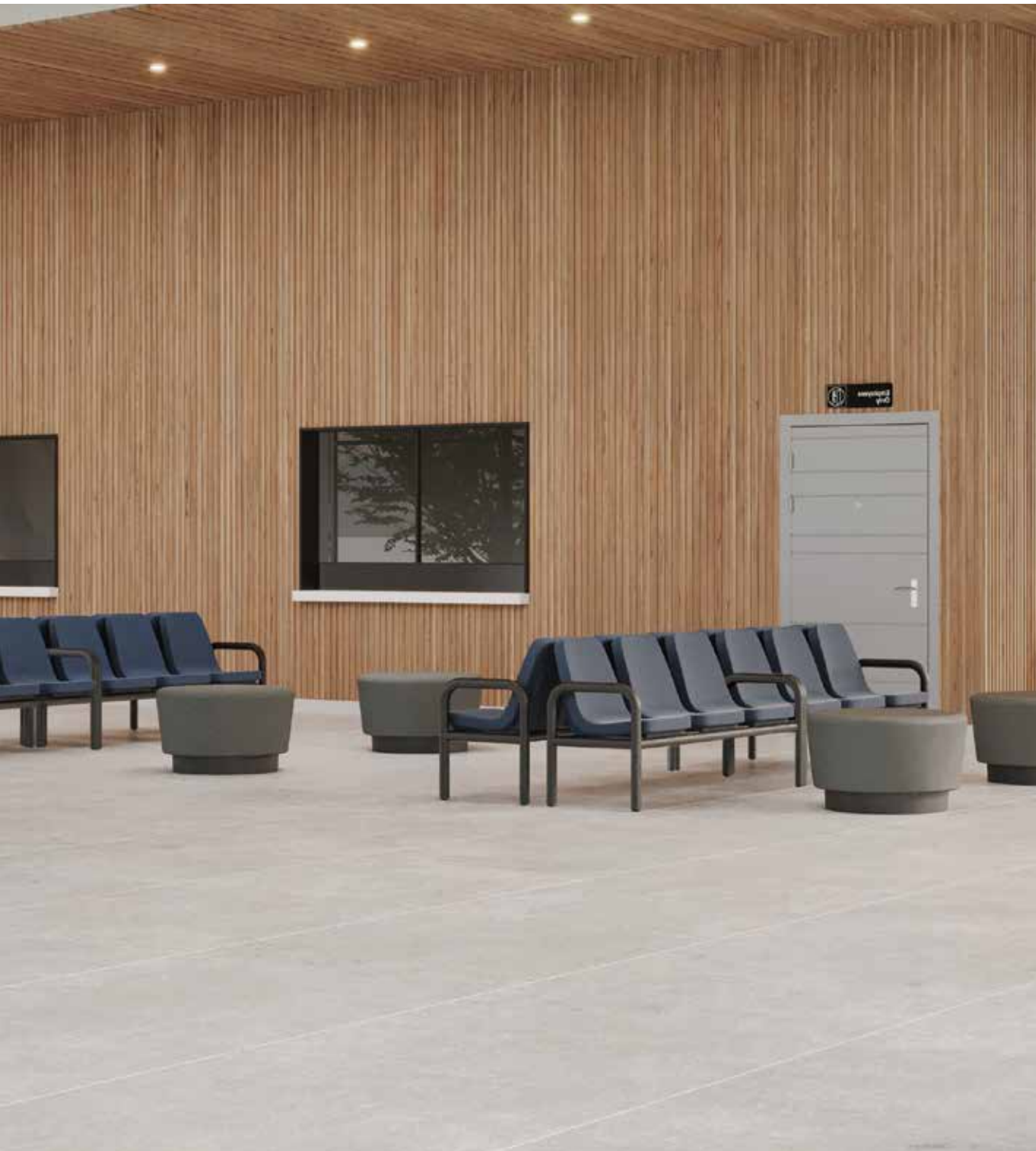
Upholstery is double stitched with concealed staples to enhance overall durability & safety.



Polyurethane
Arms

OPTIONS: TB133 Upholstery, Ganging Bracket

SEATING



BOULDER™ BEAM SEATING

Boulder™ Beam Seating series has been utilized in lobbies and waiting areas throughout the world... and are still going strong and looking good. Why? Because they're built to last. Boulder features powder coated tubular steel frames, welded steel plate seat supports, washable molded polyethylene seats, heavy-duty glides and 9 tamper resistant screws to hold each seat in place.



FINISHES

SEAT COLORS



TWILIGHT COVE CLAY SAGE SAND DOVE

*Steel base is only available in Black.

EXTENDED



CITRUS TRANQUIL MALIBU COBALT WISTERIA LUX IVORY LUX ONYX

*Extended colors require a minimum of 6 pieces



Boulder
Armless Beam Seating
2, 3, & 4 Seaters

Seat Height	18"
Seat Width	17"
Seat Depth	16"
Overall Depth	25"
2 Seat Weight	81 lbs.
3 Seat Weight	110 lbs.
4 Seat Weight	145 lbs.



Boulder
End Arm Beam Seating
2, 3, & 4 Seaters

Seat Height	18"
Arm Height	24"
Seat Width	17"
Seat Depth	16"
Overall Depth	25"
2 Seat Weight	87 lbs.
3 Seat Weight	118 lbs.
4 Seat Weight	153 lbs.



FEATURES

Welded Joints

Eliminates the potential for loose nuts, bolts or rivets.

Tamper Resistant

Each seat is secured with molded-in threaded inserts & nine security screws.

Fluid Resistant

The one-piece, seamless construction is impervious to fluids for superior infection control & easy sanitization.

OPTIONS: Glides & Bolt-Down Kit



B-SIDE TABLE & STOOL

B-Side is an ideal companion to any of the Norix® roto-molded seating products. B-Side is durable, safe, easy to clean and a natural table or stool.



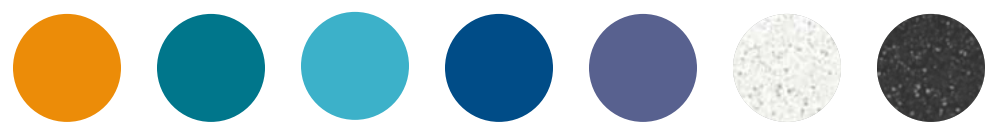
FINISHES

SEAT COLORS



TWILIGHT COVE CLAY SAGE SAND DOVE

EXTENDED



CITRUS TRANQUIL MALIBU COBALT WISTERIA LUX IVORY LUX ONYX

*Extended colors require a minimum of 6 pieces



B-Side
Square Table & Stool

Height	18"
Width	18"
Weight	12 lbs.



B-Side
Round Table & Stool

Height	18"
Diameter	18"
Weight	9 lbs.



FEATURES

Rounded Edges

Smooth, rounded edges provide a pleasing aesthetic & contribute to a safe design.

Contraband Resistant

Specifically designed without any creases or nooks to mitigate the ability to hide contraband.

Molded-In Glides

Provides floor protection without weaponization risks.

OPTIONS: Ballastable & Bolt-Down Kit



COUPE LOUNGE SEATING

The Coupe Lounge Chair combines robust durability with a contemporary style to fit seamlessly into any behavioral healthcare, correctional, or transitional housing setting. The one-piece, roto-molded design makes it extremely durable and impervious to all types of fluids – including hospital-grade cleaners and bleach!



FINISHES

SEAT COLORS



TWILIGHT COVE CLAY SAGE SAND DOVE

EXTENDED



CITRUS TRANQUIL MALIBU COBALT WISTERIA LUX IVORY LUX ONYX

*Extended colors require a minimum of 6 pieces



Coupe
Lounge Arm Chair
Indoor/Outdoor

Seat Height	17.1"
Overall Height	30"
Width	27.7"
Depth	27.3"
Weight (No Drainage)	32 lbs.
Weight (Drainage)	35 lbs.



Coupe
Lounge Armless Chair
Indoor/Outdoor

Seat Height	17.2"
Overall Height	30"
Width	21.7"
Depth	27.3"
Weight (No Drainage)	22 lbs.
Weight (Drainage)	27 lbs.



FEATURES

Ligature Resistant Design

The one-piece construction eliminates pass throughs & tie offs, thus reducing ligature risk.

Contraband Resistant

Specifically designed without any creases or nooks to mitigate the ability to hide contraband.

Recyclable

This product is recyclable & environmentally friendly.

OPTIONS: Bolt-Down Plates, Drainage, Ballastable



ELEMENT UPHOLSTERED COLLECTION

Element pairs upholstered seating down to the essentials. It is a robust, value driven product for environments that prefer attractive, durable furniture with essential core features, but do not require a wide array of options.



FINISHES

ARMS & LEGS



BLACK



Element
Lounge Chair

Seat Height	18"
Arm Height	26.4"
Overall Height	32.5"
Seat Width	23"
Overall Width	29"
Depth	29"
Weight	100 lbs.



Element
Love Seat

Seat Height	18"
Arm Height	26.4"
Overall Height	32.5"
Seat Width	46"
Overall Width	52"
Depth	29"
Weight	141 lbs.



Element
Sofa

Seat Height	18"
Arm Height	26.4"
Overall Height	32.5"
Seat Width	69"
Overall Width	75"
Depth	29"
Weight	215 lbs.

FEATURES

Tamper Resistant

The upholstered seat base is fastened with Torx secure hardware to mitigate tampering.

Affixed Arm Caps

Highly durable, pick & pry resistant polyurethane arm caps are affixed directly to the frame.

Concealed Staples

Upholstery is double stitched with concealed staples to enhance overall durability & safety.



OPTIONS: TB133 Upholstery

SEATING



FLUX™

LOUNGE SEATING

The Flux™ Collection evokes a sense of calmness, comfort and a connection with nature by integrating familiar, organic shapes into its design. The slim, space-saving base design enhances efficiency and facilitates a more streamlined layout – all without sacrificing stability.



FINISHES

SEAT COLORS



TWILIGHT COVE CLAY SAGE SAND DOVE

EXTENDED



CITRUS TRANQUIL MALIBU COBALT WISTERIA LUX IVORY LUX ONYX

*Extended colors require a minimum of 6 pieces



Flux
Guest Arm Chair
Indoor/Outdoor

Seat Height	18"
Arm Height	27"
Overall Height	32.7"
Seat Width	18.8"
Overall Width	24.4"
Overall Depth	23.9"
Weight	26 lbs.



Flux
Guest Armless Chair
Indoor/Outdoor

Seat Height	18"
Overall Height	32.7"
Seat Width	19.4"
Overall Width	19.4"
Overall Depth	24.2"
Weight	21 lbs.



Flux
Lounge Arm Chair
Indoor/Outdoor

Seat Height	17"
Arm Height	26.1"
Overall Height	32.9"
Seat Width	20.8"
Overall Width	28.1"
Overall Depth	26.8"
Weight	32 lbs.



Flux
Lounge Armless Chair
Indoor/Outdoor

Seat Height	17"
Overall Height	32.9"
Seat Width	23.1"
Overall Width	23.1"
Overall Depth	27.1"
Weight	25 lbs.



Flux
Loveseat
Indoor/Outdoor

Seat Height	17"
Arm Height	26.1"
Overall Height	32.9"
Seat Width	48.3"
Weight	73 lbs.



Flux
Fidget Rocker™
Indoor/Outdoor

Seat Height	16.9"
Arm Height	26"
Overall Height	32.8"
Seat Width	20.8"
Weight	32 lbs.



Flux
Bench
Indoor/Outdoor

Overall Height	18.1"
Overall Depth	19.9"
Overall Width	47.9"
Weight	36 lbs.



Flux
Side Table
Indoor/Outdoor

Overall Height	18.1"
Overall Depth	19.9"
Overall Width	23.9"
Weight	18 lbs.



FEATURES

Organic Shape

The use of soft edges and organic shapes is supported by research proving curved surfaces promote relaxation and can reduce stress.

Recessed Foot Cavity

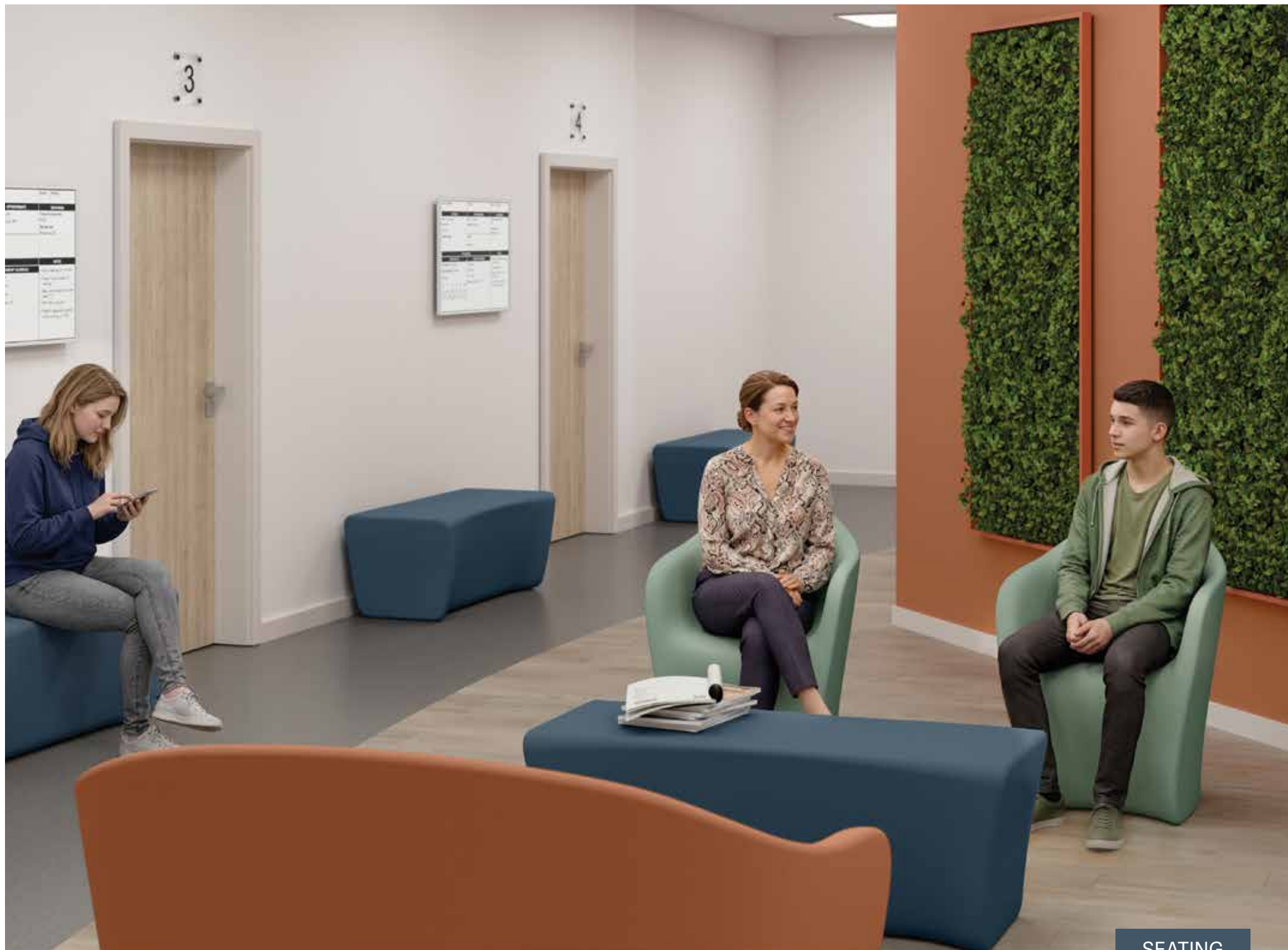
To support patients with low mobility, the recessed foot cavity allows users to position their heels closer to the chair surface and under their knees.

Seating in Motion

The exclusive Fidget Rocker™ design introduces a gentle rocking motion to help soothe the body and mind by releasing endorphins and improving blood flow.

Space-Saving Design

Designed with a slim profile to optimize space utilization, enhance efficiency and facilitate a more streamlined layout without sacrificing stability.



SEATING



FORMA MODULAR COLLECTION

Norix® has expanded its offerings with Forma, a modular upholstered seating line that is designed with attractive features and engineered to be highly durable. The many pieces in this designer-friendly line include arm chairs, cubes, benches and wedges.



FINISHES

MOLDED BASE



SIENNA DOVE RAVEN

FRAME



METALLIC SILVER

LAMINATE TOPS



KENSINGTON MAPLE WILD CHERRY ASIAN SUN PALISADES OAK MONTANA WALNUT



Forma
Arm Chair
Upholstered Seating

Seat Height	18.5"
Arm Height	26"
Overall Height	32"
Overall Width	29.5"
Depth	30"
Weight	83-91 lbs.



Forma
Armless Chair
Upholstered Seating

Seat Height	18.5"
Overall Height	32"
Width	24.5"
Depth	29.8"
Weight	58-62 lbs.



Forma
Left Arm Chair
Upholstered Seating

Seat Height	18.5"
Arm Height	26"
Overall Height	32"
Overall Width	27"
Depth	30"
Weight	70-77 lbs.



Forma
Right Arm Chair
Upholstered Seating

Seat Height	18.5"
Arm Height	26"
Overall Height	32"
Overall Width	27"
Depth	30"
Weight	70-77 lbs.



Forma
Inside Wedge
Upholstered Seating

Seat Height	18.5"
Overall Height	32"
Front Width	8.8"
Back Width	31.1"
Weight	47-50 lbs.



Forma
Outside Wedge
Upholstered Seating

Seat Height	18.5"
Overall Height	32"
Front Width	31.1"
Back Width	8.5"
Weight	41-44 lbs.



Forma
Bench Wedge
Upholstered Seating

Height	18.5"
Width	30.9"
Depth	31"
Weight	35-38 lbs.



Forma
Bench
Upholstered Seating

Height	18.5"
Width	30"
Depth	24"
Weight	40-45 lbs.

SEATING

Forma Cube

Upholstered Seating

Height	18.5"
Width	30"
Weight	49-57 lbs.



Forma Laminate Cube

Upholstered Seating

Height	18.5"
Width	30"
Weight	49-57 lbs.



FEATURES

Endless Configurations

Ten unique pieces support an endless number of custom configurations.

Concealed Staples

Upholstery is double stitched with concealed staples to enhance overall durability & safety.

Contraband Resistant

An enclosed bottom limits the capability to store and hide contraband.



SEATING



FORTE® SEATING COLLECTION

Forté® is fashioned for comfort, flexibility, and durability. With a variety of colors to choose from and an upholstery option, this series is made to humanize intensive-use environments and includes a lounge chair and guest chair that come with or without arms. These products are engineered and proven suitable for daily use in demanding environments.



FINISHES

SEAT COLORS



TWILIGHT COVE CLAY SAGE SAND DOVE

EXTENDED



CITRUS TRANQUIL MALIBU COBALT WISTERIA LUX IVORY LUX ONYX

**Extended colors require a minimum of 6 pieces*

WOOD BASE



MAPLE TEAK WALNUT

PLINTH BASE



RAVEN DOVE SIENNA

**Wood bases only available on lounge options*



Forte® Guest Arm
Upholstered Seat Options

Seat Height	18.1"
Arm Height	26.1"
Overall Height	32.9"
Seat Width	18.6"
Overall Width	24"
Depth	26.3"
Weight	28 lbs.



Forte® Guest Armless
Upholstered Seat Options

Seat Height	18.1"
Overall Height	32.8"
Seat Width	21"
Depth	26.3"
Weight	22 lbs.



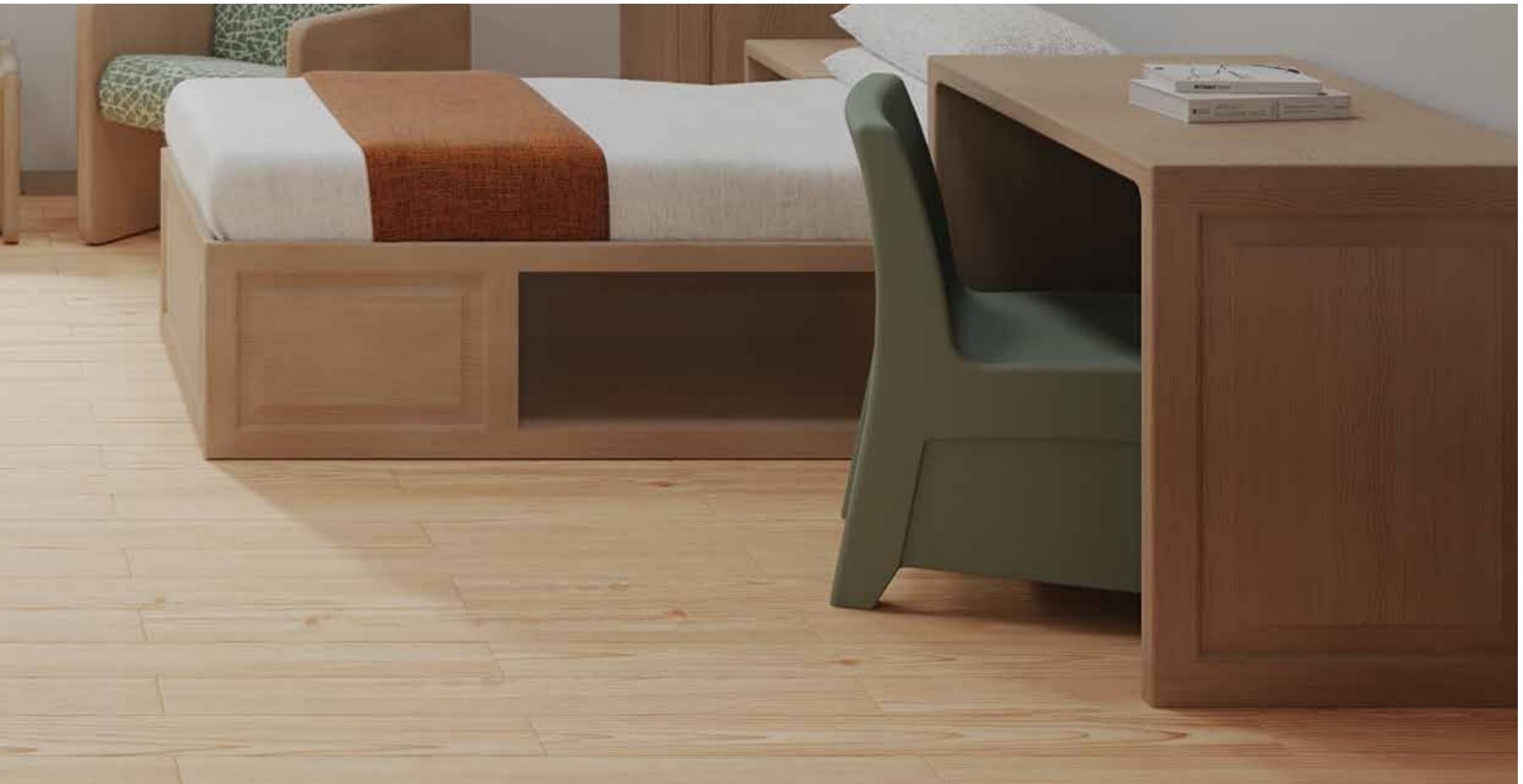
Forte® Lounge Arm
Upholstered Seat Options

Seat Height	18.1"
Arm Height	26"
Overall Height	32.6"
Seat Width	21.9"
Depth	30.9"
Weight	44 lbs.



Forte® Lounge Armless
Upholstered Seat Options

Seat Height	18.1"
Overall Height	32.7"
Seat Width	27"
Depth	30.9"
Weight	44 lbs.



FEATURES

Ergonomic Design

A generous seat width with appropriate seat & arm height supports easy egress for users with limited mobility.

Extreme Durability

The heavy-duty, durable design offers enhanced safety for residents & peace of mind for staff.

Rounded Edges

Smooth, rounded edges provide a pleasing aesthetic & contribute to a safe design.





GOBY® OUTDOOR COLLECTION

Safely utilize your outdoor spaces with Norix® outdoors. Goby® is a one-piece rotomolded chair secure in design and appealing for a unique outdoor experience. The curved design aids in helping to create a zen-like environment for relaxation, meditation, creative thought, and collaboration.



FINISHES

SEAT COLORS



TWILIGHT COVE CLAY SAGE SAND DOVE

EXTENDED



CITRUS TRANQUIL MALIBU COBALT WISTERIA LUX IVORY LUX ONYX

*Extended colors require a minimum of 6 pieces



Lounge Chair
Outdoor

Seat Height	15.8"
Overall Height	29.5"
Width	44"
Depth	31.4"
Weight	38 lbs.



Loveseat
Outdoor

Seat Height	15.8"
Overall Height	29.5"
Width	75.5"
Depth	31.4"
Weight	72 lbs.



Table
Outdoor

Height	15.5"
Width	43.5"
Depth	26"
Weight	35 lbs.

FEATURES

Adjustable Glides

Individually adjustable glides make it easy to stabilize, even when positioned on uneven surfaces.

UV Resistant

Enhanced UV resistant formulation with ultraviolet light stabilizers helps to reduce fading.

Recyclable

This product is recyclable & environmentally friendly.



OPTIONS: Bolt-Down Plates, Ballastable

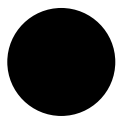


HARMONY® SEATING COLLECTION

We have created a line of contemporary, commercial furniture that's both impressive internally and externally. It's called the Harmony® Series. The Norix® Harmony® seating series blends form and function to deliver the unique combination of exceptional durability and a residential look for facilities that need humanizing products for their challenging environments.



FINISHES

ARMS CAPS
& LEGS

BLACK

BACK STYLES

BACK STYLE



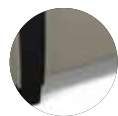
SQUARE



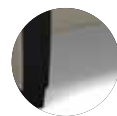
ROUND

APRON STYLES

APRON STYLES



FULL



SHORT



Harmony® Arm
Upholstered Options

Seat Height	18"
Arm Height	25.7"
Overall Height	32.3"
Seat Width	23.5"
Overall Width	31.5"
Depth	31"
Weight	130 lbs.



Harmony® Armless
Upholstered Options

Seat Height	18"
Overall Height	32"
Seat Width	24"
Depth	28"
Weight	76 lbs.



Harmony® Bariatric
Upholstered Options

Seat Height	18"
Arm Height	25.7"
Overall Height	32.3"
Seat Width	30"
Overall Width	38"
Depth	31.7"
Weight	142 lbs.



Harmony® High Back
Upholstered Options

Seat Height	18"
Arm Height	25.7"
Overall Height	48.2"
Seat Width	23.5"
Overall Width	31.5"
Depth	33.2"
Weight	138 lbs.



Harmony® Loveseat
Upholstered Options

Seat Height	18"
Arm Height	25.7"
Overall Height	32.3"
Seat Width	47"
Overall Width	55"
Depth	31"
Weight	220 lbs.



Harmony® Sofa
Upholstered Options

Seat Height	18"
Arm Height	25.7"
Overall Height	32.3"
Seat Width	70.5"
Overall Width	78.5"
Depth	31"
Weight	305 lbs.

FEATURES

Tamper Resistant Upholstery

Upholstery is double stitched with concealed staples to enhance overall durability & safety.

Extreme Durability

A fully welded steel frame base offers maximum strength & durability.

Highly Customizable

A wide range of options allows this product to satisfy the needs of nearly any environment.

Affixed Arm Caps

Highly durable, pick & pry resistant polyurethane arm caps are affixed directly to the frame.

OPTIONS: Short or Full Apron, Clean Out (open bottom), Standard Fit (open or closed bottom), Closed Bottom, TB133 Upholstery



HONDO NUEVO® SEATING COLLECTION

Hondo Nuevo® is a unique commercial furniture line that combines superior durability, comfort and style. The chair, bench and wedge options allow for flexible, modular seating arrangements—specially designed for healthcare, hospitality, education and other commercial interiors where robust products are a must.




FINISHES

SEAT COLORS




TWILIGHT CLAY SAGE SIENNA DOVE RAVEN

MOLDED WOOD BASES



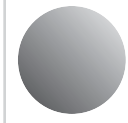
MAPLE WALNUT

MOLDED BASES



SIENNA DOVE RAVEN

STEEL BASE



METALLIC SILVER



Arm Chair
Soft Molded Foam

Seat Height	18.5"
Arm Height	26"
Overall Height	32"
Width	30"
Depth	31"
Weight	103 lbs.

* Molded Rocker Base Option



24" Armless
Soft Molded Foam

Seat Height	18.5"
Overall Height	32"
Width	24"
Depth	30"
Weight	77 lbs.



30" Armless
Soft Molded Foam

Seat Height	18.5"
Overall Height	32"
Width	30"
Depth	30"
Weight	96 lbs.



Right Arm
Soft Molded Foam

Seat Height	18.5"
Arm Height	26"
Overall Height	32"
Width	30"
Depth	31"
Weight	99 lbs.



Left Arm
Soft Molded Foam

Seat Height	18.5"
Arm Height	26"
Overall Height	32"
Width	30"
Depth	31"
Weight	99 lbs.



Seat Wedge
Soft Molded Foam

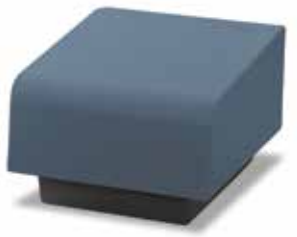
Seat Height	18.5"
Overall Height	32"
Width	31.5"
Depth	30"
Weight	76 lbs.



High Back
Soft Molded Foam

Seat Height	18.5"
Arm Height	26"
Overall Height	44"
Seat Width	21"
Overall Width	30"
Depth	31"
Weight	127 lbs.

* Molded Rocker Base Option



Footstool
Soft Molded Foam

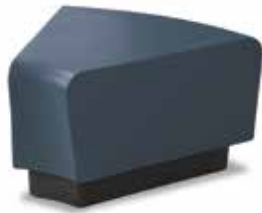
Height	15.5"
Width	20.8"
Depth	17.6"
Weight	29 lbs.



Ottoman

Soft Molded Foam

Seat Height	18.5"
Diameter	30"
Weight	62 lbs.



Bench Wedge

Soft Molded Foam

Seat Height	18.5"
Width	31.5"
Depth	30"
Weight	53 lbs.



Bench

Soft Molded Foam

Seat Height	18.5"
Width	24"
Depth	30"
Weight	62 lbs.



Cube

Soft Molded Foam

Seat Height	18.5"
Width	30"
Depth	30"
Weight	73 lbs.



Stool

Soft Molded Foam

Seat Height	18.5"
Diameter	18"
Weight	23 lbs.

FEATURES

Cushioned Comfort

A flexible polyurethane foam filling provides a comfortable cushion without sacrificing durability.

Fabricated Drip Edge

The drip edge allows for easier, more thorough sanitation by guiding fluids onto the floor instead of dripping into the base.

Fluid Resistant

The surface material is impervious to fluids for superior infection control & easy sanitization.

Peel & Puncture Resistant

The peeling & puncture resistant surface material prolongs the product lifetime & helps maintain a safe environment.



SEATING



INTEGRA SEATING

The Integra Armless Chair is specifically designed for intensive use applications, yet comfortable and lightweight. The chairs are molded in one piece so you don't have to worry about assembled components coming loose, and are stackable for adaptive applications.



FINISHES

SEAT COLORS



TWILIGHT



COVE



SAND



DOVE



Integra

Stackable Chair

Seat Height	17.5"
Overall Height	32"
Width	17.6"
Depth	17.2"
Weight	7.1 lbs.



FEATURES

Stackable

Save space & make storage easy.

Superior Strength

An "X" rib molded into the seat bottom provides superior strength & enhanced durability.

Lightweight

Weighing just 7 lbs., versatile seating arrangements can be quickly assembled & disassembled.

OPTIONS: Three-Wheel Dolly (Carries up to 15 chairs)



KUBE™ SEATING COLLECTION

Kube™ is a modern table and chair collection designed to be grouped, moved, and used to optimize any space. Hundreds of configurations are possible, combining the table, bench, arm & armless, and corner Kube pieces.



FINISHES

SEAT COLORS



TWILIGHT COVE CLAY SAGE SAND DOVE

EXTENDED



CITRUS TRANQUIL MALIBU COBALT WISTERIA LUX IVORY LUX ONYX

*Extended colors require a minimum of 6 pieces



Armless
Outdoor Seating

Seat Height	16"
Overall Height	29"
Width	28"
Seat Depth	20"
Overall Depth	28"
Weight	23 lbs.



Left Arm
Outdoor Seating

Seat Height	16"
Arm Height	21"
Overall Height	29"
Width	28"
Seat Depth	20"
Overall Depth	28"
Weight	24 lbs.



Right Arm
Outdoor Seating

Seat Height	16"
Arm Height	21"
Overall Height	29"
Width	28"
Seat Depth	20"
Overall Depth	28"
Weight	24 lbs.



Corner
Outdoor Seating

Seat Height	16"
Overall Height	29"
Width	28"
Seat Depth	20"
Overall Depth	28"
Weight	25.5 lbs.



Bench
Outdoor Seating

Height	16"
Width	28"
Depth	28"
Weight	15.5 lbs.



Table
Outdoor Seating

Height	12.1"
Width	28"
Depth	28"
Weight	17 lbs.

FEATURES

Field-Replaceable Cushions

Refresh your seating quickly & easily without requiring a full chair replacement.

UV Resistant

Enhanced UV resistant formulation with ultraviolet light stabilizers helps to reduce fading.

Endless Configurations

Five unique pieces support an endless number of custom configurations.

OPTIONS: Bolt-Down, Ganging Kit, Ballstable



MIX-UP SEATING COLLECTION

Mix-Up is an upholstered commercial furniture line from Norix® that allows you to use five different-shaped products to produce endless configurations. This diverse series is perfect for waiting rooms, lobbies or any area where playful, attractive and durable furniture is applicable.



FINISHES

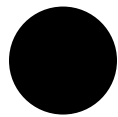
MOLDED BASE



SIENNA



DOVE



RAVEN



Small Round

Upholstered Seating

Height	18"
Diameter	17.3"
Weight	25 lbs.



Large Round

Upholstered Seating

Height	18"
Diameter	36.6"
Weight	75 lbs.



Square

Upholstered Seating

Height	18"
Width	18.3"
Depth	18.3"
Weight	18 lbs.



Rectangle

Upholstered Seating

Height	18"
Width	36.3"
Depth	18.3"
Weight	37 lbs.



Wedge

Upholstered Seating

Height	18"
Width	18.7"
Depth	18.7"
Weight	16 lbs.

FEATURES

Endless Configurations

Mix & match five different pieces to create an endless number of custom configurations.

Tamper Resistant

The base & seat are securely attached together with tamper resistant fasteners for added safety.

High-Density Foam Interior

The high-density foam interior provides stability & comfortable seating.

Drip Edge

The drip edge allows for easier, more thorough sanitation by guiding fluids onto the floor instead of dripping into the base.



PAX SEATING COLLECTION

The Pax Seating Series combines superior durability and easy cleanability with its distinctive one-piece, rotationally molded modular design. Four uniquely shaped pieces make it easy to create comfortable, highly customizable lounge areas that are engineered to excel in both indoor and outdoor environments.



FINISHES

SEAT COLORS



TWILIGHT COVE CLAY SAGE SAND DOVE

EXTENDED



CITRUS TRANQUIL MALIBU COBALT WISTERIA LUX IVORY LUX ONYX

*Extended colors require a minimum of 6 pieces



Seat Wedge
Modular Seating

Seat Height	18.4"
Overall Height	33"
Width	30.9"
Depth	31.4"
Weight	30 lbs.



Ottoman
Modular Seating

Height	18.4"
Width	30"
Depth	30"
Weight	23 lbs.



Bench
Modular Seating

Height	18.1"
Width	24"
Depth	30.4"
Weight	23 lbs.



Armless
Modular Seating

Seat Height	18.4"
Overall Height	33"
Seat Width	24"
Overall Width	24"
Depth	30.4"
Weight	30 lbs.

FEATURES

Built-In Drainage

A built-in drainage channel prevents pooling by allowing liquids to flow to the back of the seat & drain off the sides.

Ligature Resistant Design

The one-piece, roto-molded design eliminates pass throughs & tie offs, thus reducing ligature risk.

Modular Configuration

A variety of pieces in this modular seating line support a wide range of custom configurations.

UV Resistant

Enhanced UV resistant formulation with ultraviolet light stabilizers helps to reduce fading.

OPTIONS: Bolt-Down Kit, Ganging Kit, Ballastable



PROGRESS SEATING

The Progress Chair is a ergonomic stackable chair with a live hinge molded into the backrest. This commercial chair is designed to supply a high level of comfort in both upright and relaxed sitting positions. The Progress chair looks good in any environment. Pick from four seat and back colors to go with black legs and you have an attractive combination to accent a training room, a classroom, a lobby or an office.



FINISHES

SEAT COLORS



TWILIGHT



COVE



SAND



DOVE



Progress
Stackable Chair

Seat Height	17.3"
Overall Height	32"
Width	19.7"
Depth	23.2"
Weight	10 lbs.

FEATURES

Ergonomic Design

A generous seat width & appropriate seat height support easy egress for users with limited mobility.

Flexible Backrest

A live hinge is molded into the backrest to provide the flexibility required for long term comfort.



Stackable

Save space & make storage easy.

Tamper Resistant

A simple, impressive design featuring no nuts, bolts, welds or rivets mitigates tampering opportunities.



RESPITE™ LOUNGE

The Respite™ Lounge Chair utilizes trauma informed design principles to provide a calming and secure seating solution for behavioral healthcare and crisis care environments. Its gentle recline is ergonomically engineered to offer sustained comfort even during extended use. An integrated pillow with slightly curved sides offers appropriate head and neck support, provides patients with a sense of privacy while allowing staff to continue to monitor effectively.



FINISHES

SEAT COLORS



TWILIGHT CLAY SAGE SIENNA DOVE RAVEN



Respite™
Chaise Lounge

Seat Height	15.6"
Arm Height	21"
Overall Height	34.5"
Seat Width	17.7"
Overall Width	26"
Overall Depth	64.3"
Weight	130 lbs.

FEATURES

Concave Base

The concave base enables caregivers to properly position their feet, improving their ability to provide patient care.

Ergonomically Engineered

Ergonomically engineered to support patient comfort during extended use.

Integrated Pillow

An integrated pillow offers patients appropriate head & neck support.



OPTIONS: Bolt-Down Kit, Ballastable



RIPPLE™ SEATING COLLECTION

Ripple™ is a modular seating series that utilizes an intriguing blend of comfort, durability and neuro-aesthetic design principles to promote a positive emotional and psychological experience. Ripple's soft lines bring a gentle, humanizing touch to institutional environments without sacrificing safety or long-term durability.



FINISHES

SEAT COLORS



TWILIGHT



CLAY



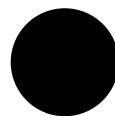
SAGE



SIENNA



DOVE



RAVEN

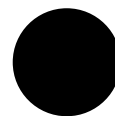
BASE COLORS



SIENNA



DOVE



RAVEN



Guest Arm Chair

Soft Molded Foam

Seat Height	18"
Arm Height	25.4"
Overall Height	32.5"
Seat Width	17.2"
Overall Width	25.5"
Overall Depth	25"
Weight	58 lbs.



Guest Armless Chair

Soft Molded Foam

Seat Height	18"
Overall Height	32.5"
Seat Width	19.2"
Overall Width	19.5"
Overall Depth	25"
Weight	48 lbs.



Lounge Arm Chair

Soft Molded Foam

Seat Height	17.5"
Arm Height	25"
Overall Height	32.5"
Seat Width	19.7"
Overall Width	31"
Overall Depth	30"
Weight	89 lbs.



Lounge Armless Chair

Soft Molded Foam

Seat Height	17.5"
Overall Height	32.5"
Seat Width	24"
Overall Width	24"
Overall Depth	30"
Weight	73 lbs.



Right Arm Sectional

Soft Molded Foam

Seat Height	17.5"
Arm Height	25"
Overall Height	32.5"
Seat Width	19.8"
Overall Width	25.5"
Overall Depth	30"
Weight	75 lbs.



Left Arm Sectional

Soft Molded Foam

Seat Height	17.5"
Arm Height	25"
Overall Height	32.5"
Seat Width	19.8"
Overall Width	25.5"
Overall Depth	30"
Weight	75 lbs.

FEATURES

Cushioned Comfort

A flexible polyurethane foam filling provides a comfortable cushion without sacrificing durability.

Neuro-Aesthetic Design

The simple & repetitive pattern promotes positive emotional & psychological experiences among residents.

Endless Configurations

Eight unique pieces in this modular seating line support an endless number of custom configurations.

Soothing Surface

A soothing surface texture allows users to self-soothe, helping de-escalate behavior & promote calmness.

OPTIONS: Bolt-Down Kit, Ganging, Ballastable with Steel Plates

**Ottoman**

Soft Molded Foam

Height	18"
Width	24"
Depth	30"
Weight	59 lbs.

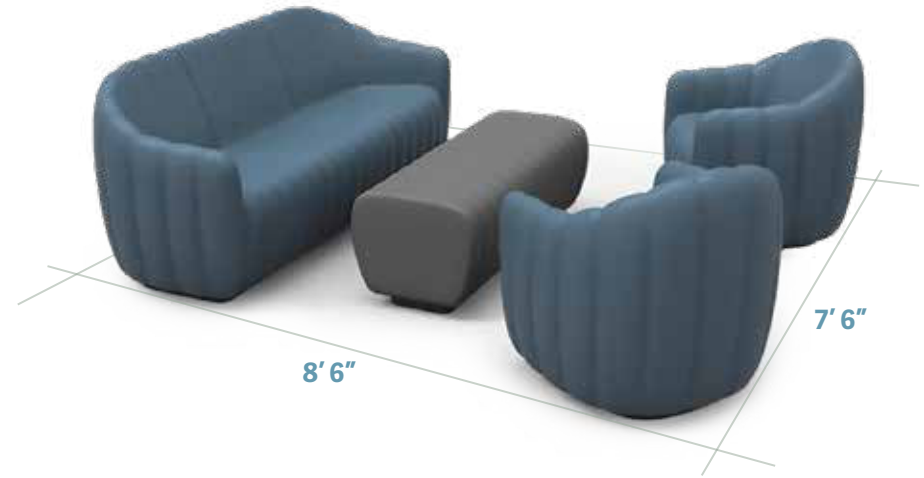
**Bench**

Soft Molded Foam

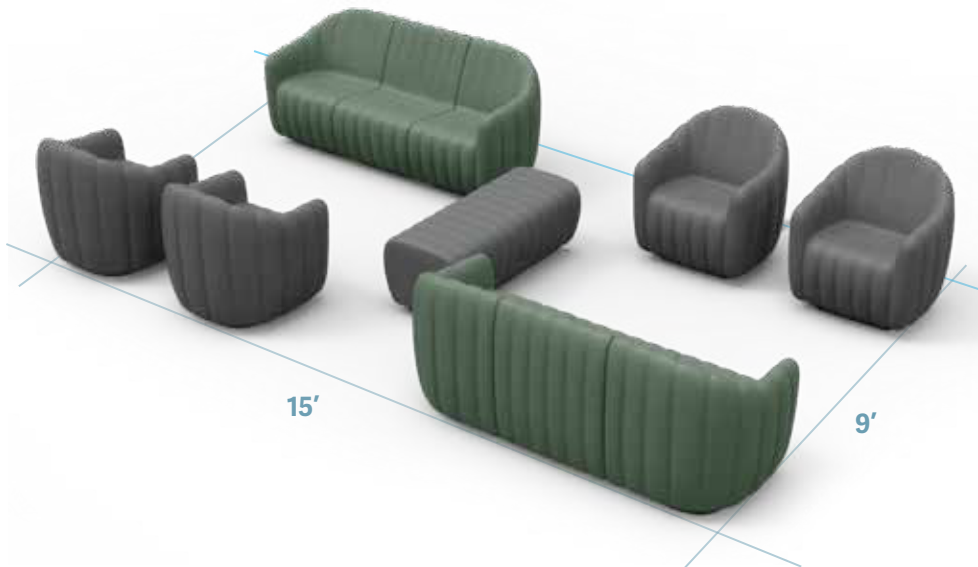
Height	18"
Width	48"
Depth	20"
Weight	75 lbs.

Dayroom - 5 Seat Layout

Overall Square Footage: 64 Sqft

**Dayroom - 10 Seat Layout**

Overall Square Footage: 135 Sqft

**Crisis Care Lobby - 8 Seat Layout**

Overall Square Footage: 100 Sqft





SEATING



RIPTIDE™ MODULAR COLLECTION

Inspiring outdoor spaces begin with nature, and that's the influence behind Norix® Wishbone Seating. The curvaceous organic design of Wishbone accentuates outdoor environments and assists in creating spaces for healing and comfort. Pair Wishbone with the Riptide bench to create a versatile modular seating arrangement for any room or outdoor space.



FINISHES

SEAT COLORS



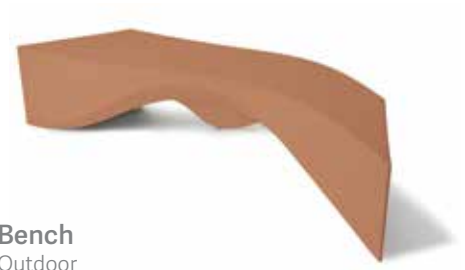
TWILIGHT COVE CLAY SAGE SAND DOVE

EXTENDED



CITRUS TRANQUIL MALIBU COBALT WISTERIA LUX IVORY LUX ONYX

*Extended colors require a minimum of 6 pieces



Bench
Outdoor

Height	18"
Width	85.8"
Depth	28.5"
Weight	52 lbs.



Wishbone
Outdoor

Height	18"
Widest Part	86"
Weight	81 lbs.



FEATURES

Adjustable Glides

Individually adjustable glides make it easy to stabilize, even when positioned on uneven surfaces.

Recyclable

This product is recyclable & environmentally friendly.

UV Resistant

Enhanced UV resistant formulation with ultraviolet light stabilizers helps to reduce fading.

OPTIONS: Ganging Kit, Bolt-Down Kit, Ballastable



ROCKSMART® ROCKER

Easily cleanable and highly durable, RockSmart® is GreenGuard certified and available in a variety of attractive colors. The generous arc provides a relaxing and safe rocking action while securely affixed nylon runners protect floors and rear bumpers indicate the limits of safe rocking.



FINISHES

SEAT COLORS



TWILIGHT

COVE

CLAY

SAGE

SAND

DOVE

EXTENDED



CITRUS

TRANQUIL

MALIBU

COBALT

WISTERIA

LUX IVORY

LUX ONYX

**Extended colors require a minimum of 6 pieces*



RockSmart® 16"
Rocker

Seat Height	17.5"
Overall Height	41.4"
Seat Width	20.5"
Overall Width	25.5"
Depth	40.2"
Weight	49 lbs.



RockSmart® 18"
Rocker

Seat Height	18.5"
Overall Height	44"
Seat Width	21.8"
Overall Width	27"
Depth	45"
Weight	51 lbs.



FEATURES

Contraband Resistant

Specifically designed without any creases or nooks to mitigate the ability to hide contraband.

Easy Cleanability

Bleach solutions & hospital-grade cleaners can safely be used for sanitation.

Rounded Edges

Smooth, rounded edges provide a pleasing aesthetic & contribute to a safe design.

OPTIONS: Heavier Weight Options With or Without Runners *Ballasting is not available.



TERRA SEATING COLLECTION

Terra is a seating series from Norix® with a wide assortment of offerings that allow facilities to create highly customized configurations from one product line. That means no more endless searching for furniture that meets your specific needs. Terra is tailored to one-stop shopping for highly durable and aesthetically pleasing integrated seating. Chairs are available in both a 22 and 30-inch-wide variety and can stand alone, be set in row or be connected together in tandem.



FINISHES

WOOD ARM CAPS



MAPLE

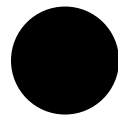


TEAK



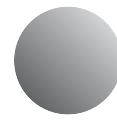
WALNUT

ARM CAPS

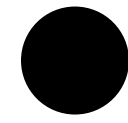


RAVEN

FRAME



METALLIC SILVER



BLACK



22" Arm Chair
Upholstered Seating

Seat Height	19"
Overall Height	34.8"
Width	26.5"
Depth	26"
Open Arm Weight	51.5 lbs.
Half Arm Weight	66.5 lbs.
Full Arm Weight	81.5 lbs.



30" Arm Chair
Upholstered Seating

Seat Height	19"
Overall Height	34.8"
Width	34.5"
Depth	26"
Open Arm Weight	64.3 lbs.
Half Arm Weight	79.3 lbs.
Full Arm Weight	94.3 lbs.



22" Tandem
Upholstered Seating

Seat Height	19"
Overall Height	34.8"
2 Seat Width	50.5"
3 Seat Width	74.5"
Depth	26"
2 & 3 Seat Open Arm Weight	93 - 154.5 lbs.
2 & 3 Seat Half Arm Weight	115.5 - 184.5 lbs.
2 & 3 Seat Full Arm Weight	138 - 214.5 lbs.



30" Tandem
Upholstered Seating

Seat Height	19"
Overall Height	34.8"
2 Seat Width	66.5"
3 Seat Width	98.5"
Depth	26"
2 & 3 Seat Open Arm Weight	118.6 - 192.9 lbs.
2 & 3 Seat Half Arm Weight	141.1 - 222.9 lbs.
2 & 3 Seat Full Arm Weight	163.6 - 252.9 lbs.



Mixed Tandem
Upholstered Seating

Seat Height	19.2"
Overall Height	34.8"
Width	61"
Depth	26.2"
Open Arm Weight	145 lbs.
Half Arm Weight	177 lbs.
Full Arm Weight	209 lbs.

FEATURES

Affixed Arm Caps

Highly durable, pick & pry resistant arm caps are affixed directly to the frame.

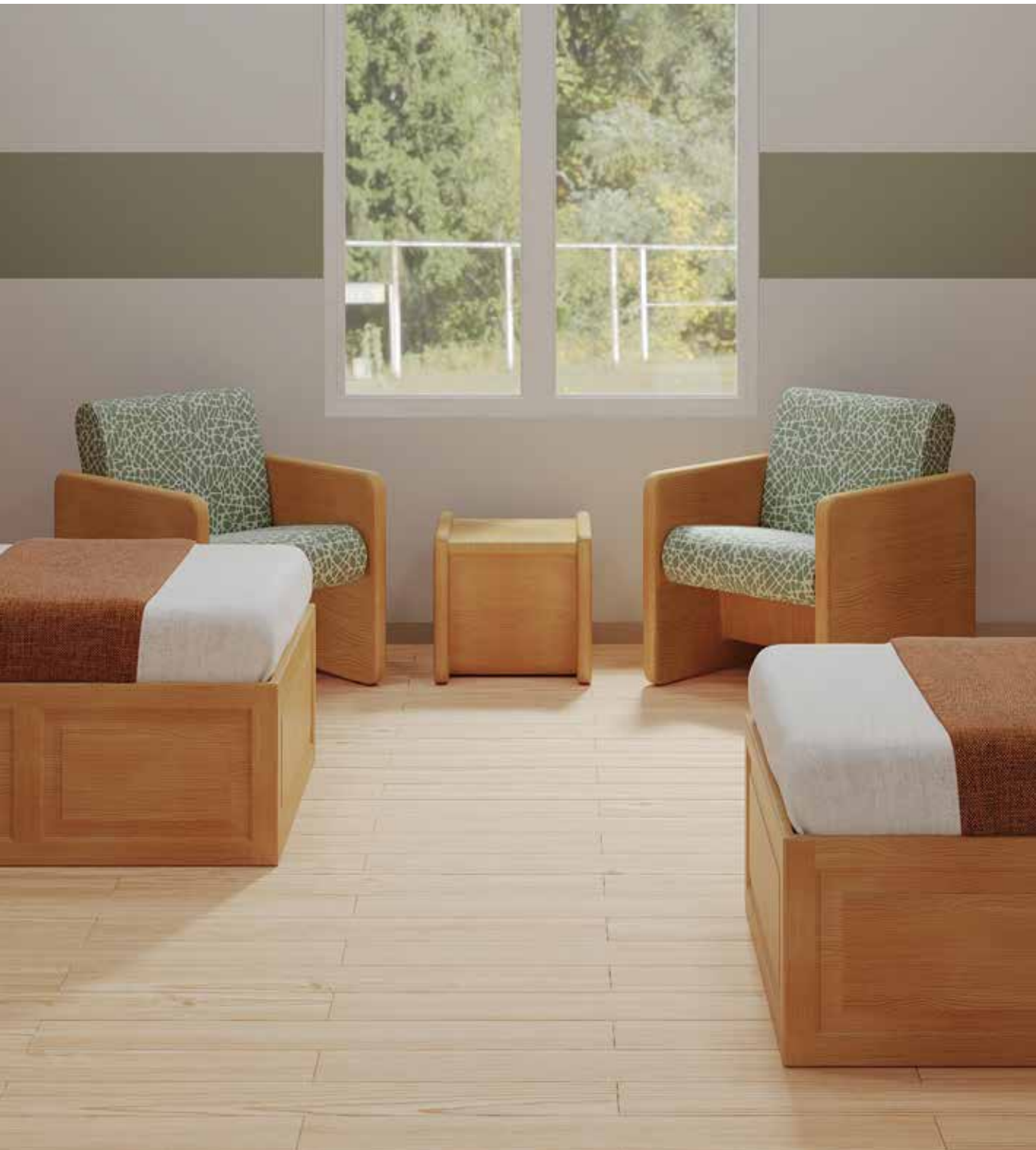
Concealed Staples

Upholstery is double stitched with concealed staples to enhance overall durability & safety.

Robust Design

A balanced combination of modern design & robust durability.

OPTIONS: TB133 Upholstery, Bolt-down Plate, Ballastable with Steel Plate



TORO LOUNGE

The Toro Lounge Chair utilizes our unique TruGrain® polymer to preserve the familiar, homelike appearance of natural wood furnishings while satisfying the necessary safety and durability requirements of challenging environments. Perfected after years of research and development, the Toro Lounge Chair is a safe, secure way to create a warm and rich ambiance in a multitude of environments.



FINISHES

COLORS



HARVEST



BISCOTTI



JAVA



Toro

Lounge Arm

Seat Height	18"
Arm Height	23.6"
Overall Height	31.2"
Seat Width	22"
Overall Width	26"
Seat Depth	18"
Overall Depth	27.5"
Weight	50 lbs.

FEATURES

Concealed Staples

Upholstery is double stitched with concealed staples to enhance overall durability & safety.

Tamper Resistant

The upholstered seat base is fastened with Torx secure hardware to mitigate tampering.



TruGrain™ Technology

Designed to mimic the warm, traditional look of natural wood while delivering the superior performance of polymer.

OPTIONS: TB133 Upholstery, Ganging Kit, Bolt-Down Plate, Ballastable



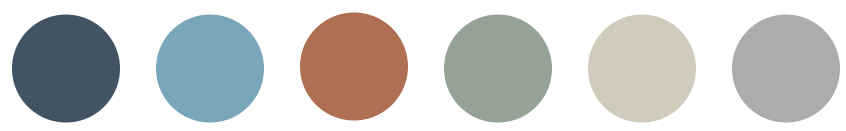
VERSAFRAME™ MODULAR BEAM SEATING

VersaFrame™ is a modular seating line specially designed to offer versatility and long-term durability for challenging environments. The heavy duty, 16-gauge steel frame supports an endless number of configurations, enabling VersaFrame™ to be formed into rows of any length or as a stand-alone seat. As an added bonus, VersaFrame™ is shipped flat packed to minimize packaging material use, improve shipping efficiency and help reduce our carbon footprint.



FINISHES

SEAT COLORS



TWILIGHT COVE CLAY SAGE SAND DOVE

**Steel base is only available in Black.*

EXTENDED



CITRUS TRANQUIL MALIBU COBALT WISTERIA LUX IVORY LUX ONYX

**Extended colors require a minimum of 6 pieces*



Versaframe™

Seat Height	18"
Arm Height	24"
Overall Height	31.5"
Seat Width	17"
Seat Depth	16"
Overall Depth	25"
Weight	45 lbs.
Add-On Unit Weight	37 lbs.



FEATURES

Endless Configurations

This modular seating line allows for an endless number of configurations & can easily adapt to layout changes.

Extreme Durability

The heavy-duty, durable design offers enhanced safety for residents & peace of mind for staff.

Flat Pack Shipping

Shipped flat to minimize packaging material use, improve shipping efficiency & reduce our carbon footprint.

OPTIONS: Non-Removable Glides, Bolt-Down Kit, Cuff Rings, Add on Unit



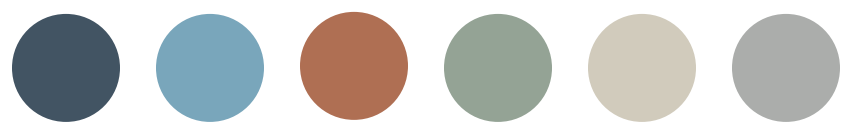
VESTA™ SEATING COLLECTION

The Vesta™ seating collection provides a unique blend of ultra-safe design with beautiful curved surfaces and colors. The sweeping form fully contacts the floor to mitigate ligature points and can be ballasted for extra security. The rotationally-molded polyethylene is easy to sanitize and provides superior durability.



FINISHES

SEAT COLORS



TWILIGHT COVE CLAY SAGE SAND DOVE

EXTENDED



CITRUS TRANQUIL MALIBU COBALT WISTERIA LUX IVORY LUX ONYX

*Extended colors require a minimum of 6 pieces



Guest Arm
Upholstered Seat Options

Seat Height	18.2"
Arm Height	25.7"
Overall Height	33"
Seat Width	19"
Overall Width	24"
Overall Depth	26.6"
Weight	30 lbs.



Guest Armless
Upholstered Seat Options

Seat Height	18.2"
Overall Height	33"
Seat Width	21"
Overall Depth	26.5"
Weight	24 lbs.



Lounge Arm
Upholstered Seat Options

Seat Height	18.2"
Arm Height	25.7"
Overall Height	32.8"
Seat Width	21"
Overall Width	27"
Overall Depth	31.3"
Weight	34 lbs.



Lounge Armless
Upholstered Seat Options

Seat Height	18.2"
Overall Height	32.8"
Seat Width	27"
Overall Depth	31.3"
Weight	30 lbs.



Vesta Junior
Upholstered Seat Options

Seat Height	16"
Overall Height	30"
Seat Width	19"
Overall Depth	16.5"
Weight	19 lbs.

FEATURES

Contraband Resistant

Specifically engineered without any creases or nooks to mitigate the ability to hide contraband.

Easy Cleanability

Bleach solutions & hospital grade cleaners can safely be used for sanitation.

Non-Removable Glides

Non-removable, steel encased floor glides provide floor protection without weaponization risks.

OPTIONS: Upholstered Seat, TB133 Upholstery, Bolt-Down Kit, Ballastable



WINK™ LOUNGE

The Wink™ Series is a true epitome of style and functionality. Wink™ is constructed with a one-piece, rotationally molded polyethylene frame that is impervious to fluids, incredibly impact resistant and easy to clean. Its playful, curvy design is available in a wide array of color choices and hundreds of upholstery options, allowing any facility to indulge in a touch of elegance without sacrificing safety.



FINISHES

SEAT COLORS



TWILIGHT



COVE



CLAY



SAGE



SAND



DOVE

EXTENDED



CITRUS



TRANQUIL



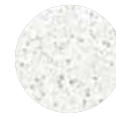
MALIBU



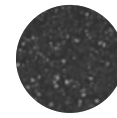
COBALT



WISTERIA



LUX IVORY



LUX ONYX

*Extended colors require a minimum of 6 pieces



Wink

Lounge Arm

Seat Height	18.5"
Arm Height	25.4"
Overall Height	31.4"
Seat Width	22"
Overall Width	26"
Depth	18.7"
Weight	42 lbs.



* Replacement cushions available

FEATURES

Easy Cleanability

Built in clean-out spaces on the sides & back simplify the cleaning process.

Field-Replaceable Cushions

Refresh your seating quickly & easily without requiring a full chair replacement.

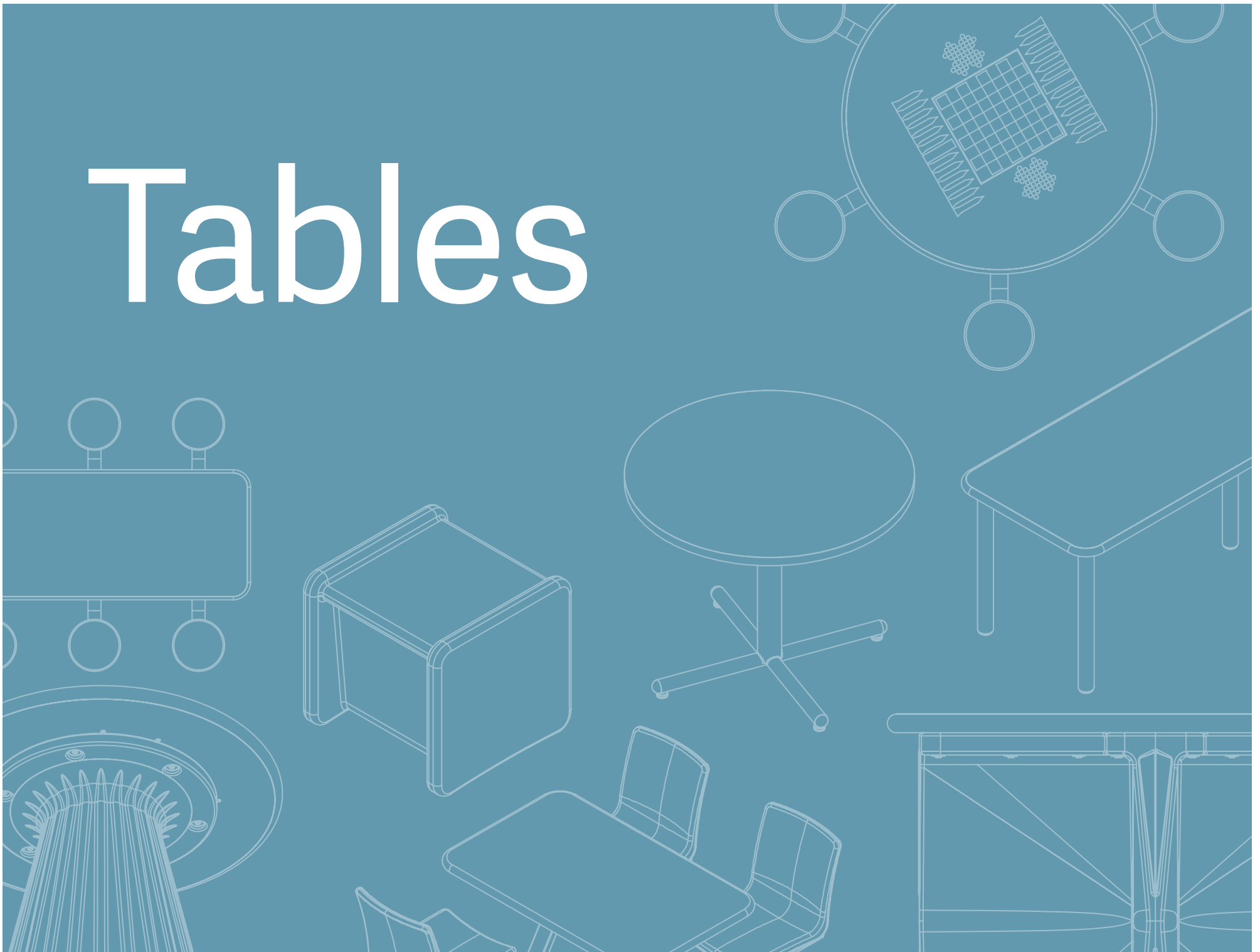
Tamper Resistant

The upholstered seat base is fastened with Torx secure hardware to mitigate tampering.

OPTIONS: Ganging Kit, Bolt-Down Kit, TB133 Upholstery, Ballastable

SEATING

Tables







DOUBLE PEDESTAL TABLE COLLECTION

Built for connection and comfort, the Double Pedestal Table brings people together while respecting individual space. Its generous proportions support up to eight users with plenty of room to dine, work, or gather comfortably. The clean pedestal design keeps layouts simple and reduces visual clutter, while ADA-compliant accessibility ensures easy access for wheelchairs and other mobility aides – creating an inclusive table designed for everyone.



FINISHES

TOPS

KENSINGTON MAPLE WILD CHERRY ASIAN SUN MONTANA WALNUT PALISADES OAK CALCUTTA MARBLE BLACK ALICANTE TITANIUM EVOLVE

EVOLVE BASES

TWILIGHT COVE DOVE SIENNA RAVEN

EXTENDED

CITRUS TRANQUIL MALIBU COBALT WISTERIA LUX IVORY LUX ONYX

*Extended colors require a minimum of 6 pieces



Evolve Base

36" x 96" Top

Height	31.1"
Space between bases	31"
Overall Length	96"
Weight	196 lbs.

Jupiter Base

36" x 96" Top

Height	29.3"
Space between bases	35.8"
Overall Length	96"
Weight	180 lbs.

* Available only in a Raven base

FEATURES

Generously Proportioned

Appropriately sized to balance shared use with individual personal space while supporting up to eight people.

Reduced Sensory Stress

Designed to streamline layouts and relieve visual clutter, this tabletop can help reduce sensory stress.

Wheelchair Accessibility

This product is intentionally designed to be compliant with ADA accessibility requirements for wheelchairs and other mobility aides.

OPTIONS: Ballastable and Bolt-Down Kit



EVOLVE™ TABLE COLLECTION

An eloquent evolution from a traditional table design, the Evolve™ Table combines a modern design aesthetic with the extreme safety and durability standards of Norix® products. Ribbed design details provide a neutral and comforting repetitive pattern while avoiding perceived two-dimensional imagery. The tapered base creates increased stability when ballasted and allows for easy cleaning.



FINISHES

TOPS



KENSINGTON
MAPLE



WILD
CHERRY



ASIAN
SUN



MONTANA
WALNUT



PALISADES
OAK



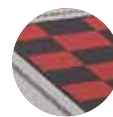
CALCUTTA
MARBLE



BLACK
ALICANTE



TITANIUM
EVOLVE



TITANIUM
EVOLVE
GAMETOP



DUOFORM

**DuoForm top only
available in 42" Square*

BASES



TWILIGHT



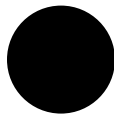
COVE



SIENNA



DOVE



RAVEN

EXTENDED



CITRUS



TRANQUIL



MALIBU



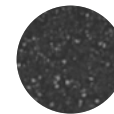
COBALT



WISTERIA



LUX IVORY



LUX ONYX

**Extended colors require a minimum of 6 pieces*



Laminate Square Top

36" & 42"

Overall Height	31.1"
36" Square Weight	85 lbs.
42" Square Weight	104 lbs.



Laminate Round Top

36", 42" & 48"

Overall Height	31.1"
36" Round Weight	74 lbs.
42" Round Weight	88 lbs.
48" Round Weight	106 lbs.



DuoForm Top

42"

Overall Height	31.1"
Weight	55 lbs.



Evolve Jr.

36" Square & Round

Overall Height	26.1"
36" Square Weight	76 lbs.
36" Round Weight	73 lbs.

FEATURES

Easy Clean Table Base

A recessed, untextured collar wraps around the bottom of the table base, enabling cleaning instruments to easily sanitize around the base of the table.

Enhanced Stability

In addition to being ballastable, the base is bolt-down capable with increased contact points to ensure stability, prevent tipping and reduce the risk of moving or throwing.

Neuro-Aesthetic Design

The simple dimensional pattern and rotational symmetry of the base promote positive emotional and psychological experiences among residents.

Adolescent-Friendly Dimensions

Holistically designed with size-appropriate dimensions for use in adolescent environments.

OPTIONS: Bolt-Down Kit, Concealment Plate *Indoor use only with DuoForm Top, Ballastable



FORTE® TABLE COLLECTION

The Forté® Café Table has a molded cylindrical hour glass base that pairs with Forté® Guest Chairs. Available as molded, round or square laminated top. Engineered and proven suitable for daily use in demanding environments.



FINISHES

TOPS



KENSINGTON
MAPLE



WILD
CHERRY



ASIAN
SUN



MONTANA
WALNUT



PALISADES
OAK



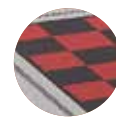
CALCUTTA
MARBLE



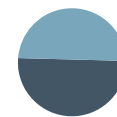
BLACK
ALICANTE



TITANIUM
EVOLVE



TITANIUM
EVOLVE
GAMETOP



DUOFORM

*DuoForm top only
available in 42" Square

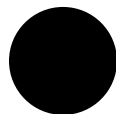
MOLDED BASES



SIENNA



DOVE



RAVEN



Cafe Table
Molded Top

Height	29.2"
Diameter	36"
Weight	31 lbs.



Laminate Top
36", 42" & 48"

Height	30.5"
42" Round Diameter	42"
42" Square	42" x 42"
48" Round Diameter	48"
Weight	89-112 lbs.



DuoForm Top
42" Square

Height	30.5"
Width	42"
Depth	42"
Weight	56 lbs.

FEATURES

Easy Cleanability

The laminate top is stain & moisture resistant, allowing for bleach solutions & hospital-grade cleaners to safely be used for.

Non-Removable Glides

Non-removable floor glides provide floor protection without weaponization risks.

Superior Tabletops

The premium grade, extra thick top is faced with high-pressure laminate for scratch & impact resistance.

OPTIONS: Concealment Plate *Indoor use only with DuoForm Top, Ballastable



FORTE® OCCASIONAL COLLECTION

The Forté® Occasional is a free-standing commercial table that can also be ganged with lounge seating to create intermediate or corner tables. All tops come with embedded T-nuts for a secure steel-to-steel connection.



FINISHES

TOPS



KENSINGTON
MAPLE



WILD
CHERRY



ASIAN
SUN



MONTANA
WALNUT



PALISADES
OAK



CALCUTTA
MARBLE



BLACK
ALICANTE



TITANIUM
EVOLVE

MOLDED BASES



SIENNA



DOVE



RAVEN

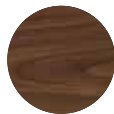
WOOD BASES



MAPLE



TEAK



WALNUT



Occasional Table

Wood Base

Height	13.5"
Width	27"
Depth	27"
Weight	47.5 lbs.



Occasional Table

Molded Base

Height	13.2"
Width	27"
Depth	27"
Weight	48 lbs.

FEATURES

Tamper Resistant

The base & top are securely attached with embedded T-nuts & pin-in Torx head security hardware to create a steel-to-steel connection.

Non-Removable Glides

Non-removable, steel encased floor glides protect the floor from scratching without risking the safety of residents & staff.

Easy Cleanability

Bleach solutions & hospital grade cleaners can safely be used for sanitation without effecting the surface material or color.

OPTIONS: *Ganging Kit, Bolt-Down, Ballastable*



JUPITER TABLE COLLECTION

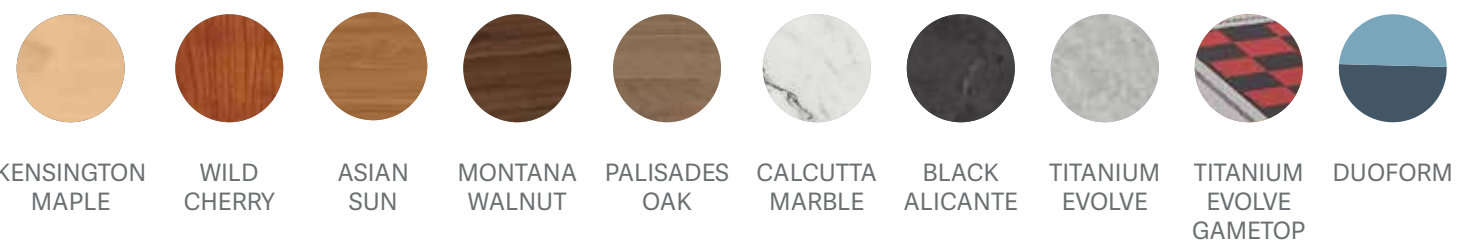
Sometimes you want a table that is easy to move around. Other times, you'd like that table to stay in one place, but you don't want to bolt it to the floor. Enter the Norix® Jupiter Table! The Jupiter Table is designed to be weighted on site to maintain space flexibility and allow for efficient floor maintenance as the needs of an environment change. Loading the base with the recommended 200 pounds of sand keeps the table in one place.



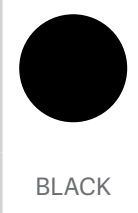
FINISHES

TOPS

*DuoForm top only available in 42" Square



MOLDED BASE



Jupiter

Laminate Base

36" Round Diameter	36"
36" Square	36" x 36"
42" Round Diameter	42"
42" Square	42" x 42"
48" Round Diameter	48"
Weight	68-103 lbs.

* All table heights are 29.3"



Jupiter

DuoForm Top

Height	29.5"
Width	42"
Depth	42"
Weight	45 lbs.

FEATURES

Contraband Resistant

Specifically designed without any creases or nooks to mitigate the ability to hide contraband.

Extreme Durability

The heavy-duty, durable design offers enhanced safety for residents and peace of mind for staff.

Tamper Resistant

The base and top are attached with Torx secure hardware to mitigate tampering.

OPTIONS: Concealment Plate (DuoForm Top Only), Ballastable



LEG-STYLE TABLE COLLECTION

The Norix® Leg-Style Molded Edge Tables won't wobble or tip. When you start with 4" diameter 14 gauge tubular steel legs fully welded to 1/4" steel mounting plates, you end up with an incredibly strong, stable and durable table. The Leg-Style Table legs are joined to the top using tamper-resistant screws connected to embedded t-nuts, for a secure steel-to-steel connection.

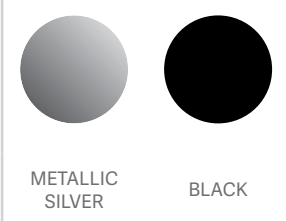


FINISHES

TOPS



METAL LEGS



Round & Square Tables

2.5" & 4" Legs

36" Square	36" x 36"
42" Square	42" x 42"
48" Round Diameter	48"
Weight	107-138 lbs.

* All table heights are 29"



Rectangle Table

2.5" & 4" Legs

30" x 72"	30" x 72"
30" x 96"	30" x 96"
Weight	124-190 lbs.

* All table heights are 29"

FEATURES

Contraband Resistant

Specifically designed without any creases or nooks to mitigate the ability to hide contraband.

Non-Removable Glides

Non-removable floor glides provide floor protection without weaponization risks.

Secure Molded Edge

The molded edge is radiused for comfort & pressure fused to make it permanently fixed, highly sanitary and pick resistant.

OPTIONS: 2.5" and 4" Diameter Legs, Bolt-Down Kit



MAX-MASTER[®] TABLE COLLECTION

The Max-Master[®] commercial furniture series by Norix[®] is particularly well suited for dining halls and dayrooms where reliable performance is a must. Whether bolted to the floor or freestanding on adjustable glides, the distinctive individual seat/leg design provides superior stability. Compression molded composite seats, premium table top and unique steel leg design delivers an exceptional table for continuous daily use in challenging environments.



FINISHES

TOPS



KENSINGTON
MAPLE



WILD
CHERRY



ASIAN
SUN



MONTANA
WALNUT



PALISADES
OAK



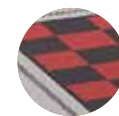
CALCUTTA
MARBLE



BLACK
ALICANTE



TITANIUM
EVOLVE



TITANIUM
EVOLVE
GAMETOP

STAINLESS
STEEL TOP



STAINLESS
STEEL W/
QUIETCORE



STAINLESS
STEEL

*Stainless Steel with Quietcore available on 42" and 54" round only.
*Stainless Steel available on 30"x72" and 30"x96" only.

SEATS



TWILIGHT



COVE



SAND



RAVEN

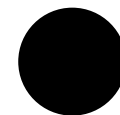


STAINLESS
STEEL

LEGS



METALLIC
SILVER



BLACK



Round Table
42", 54" & 60"

42" Diameter	76" x 76"
54" Diameter	88" x 88"
60" Diameter	94" x 94"
Weight	183-372 lbs.

* All table heights are 31.8"



Rectangle Table
30"x72" & 30"x96"

30" x 72"	63" x 72"
30" x 96"	63" x 96"
Weight	280-375 lbs.

* All table heights are 31.8"

FEATURES

Acoustic Absorption

Sound deadening tabletop & seat options assist with noise reduction, helping maintain a calm acoustic environment.

Extreme Durability

The extra strength top is attached to a solid steel base with embedded T-Nuts to maximize long-term durability.

Stain & Scratch Resistant Seating

The high-density, color impregnated, compression molded composite seats offer stain & scratch resistance.

OPTIONS: Glide Kit, Bolt-Down Kit, ADA Compliant, Leg Protectors



MULTI-PURPOSE TABLE COLLECTION

Most commercial tables are put together with easily removed screws, nuts, bolts, screw-out glides and snap-on parts. Norix® created the Multi-Purpose table Collection specifically to avoid those attributes so you don't have to think about the possibility of injury by altered furniture parts. The Multi-Purpose Table is ideal for many commercial needs where durability, safety, and flexibility are needed.



FINISHES

TOPS



KENSINGTON
MAPLE



WILD
CHERRY



ASIAN
SUN



MONTANA
WALNUT



PALISADES
OAK



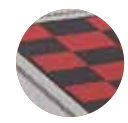
CALCUTTA
MARBLE



BLACK
ALICANTE



TITANIUM
EVOLVE

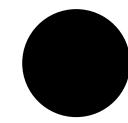


TITANIUM
EVOLVE
GAMETOP

METAL LEGS



METALLIC
SILVER



BLACK



Square & Round

X-Base Models

36" Round Diameter	36"
36" Square	36" x 36"
42" Round Diameter	42"
42" Square	42" x 42"
Weight	53-79 lbs.

* All table heights are 29"



Rectangle Table

T-Base Models

18" x 60"	
24" x 60"	
30" x 60"	
Weight	59-91 lbs.

* All table heights are 29"

FEATURES

Extreme Durability

The base is comprised of heavy-duty, 12-gauge steel tubes, fully welded & sealed on exposed ends to maximize long-term durability.

Non-Removable Glides

Tamper resistant, adjustable leveling glides provide additional stability & floor protection without weaponization risks.

Tamper Resistant

The base & top are attached with Torx secure hardware to mitigate tampering.



OASIS[®] TABLE COLLECTION

If your environment demands a more robust solution for cluster seating, your search is over. This Norix[®] cafeteria seating collection will meet your needs. Oasis[®] tables, with fixed or swivel seats, are designed and engineered specifically for dayrooms, dining halls, and visitation areas—perfect for situations where users need more back support than traditional stools provide.



FINISHES

TOPS



KENSINGTON
MAPLE



WILD
CHERRY



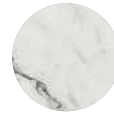
ASIAN
SUN



MONTANA
WALNUT



PALISADES
OAK



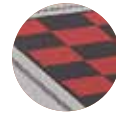
CALCUTTA
MARBLE



BLACK
ALICANTE



TITANIUM
EVOLVE



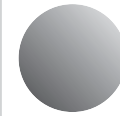
TITANIUM
EVOLVE
GAMETOP

STAINLESS
STEEL TOP



STAINLESS
STEEL
INLAY

LEGS



METALLIC
SILVER



BLACK

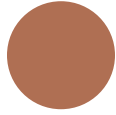
SEATS



TWILIGHT



COVE



CLAY



SAGE



SAND



DOVE

EXTENDED



CITRUS



TRANQUIL



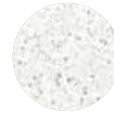
MALIBU



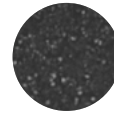
COBALT



WISTERIA



LUX IVORY



LUX ONYX

**Extended colors require a minimum of 6 pieces*



Cluster Seating
30" x 48"

Seat Height	18.3"
Seat Back Height	34"
Seat Width	17"
Table Height	31"
Weight	220 lbs.



Cluster Seating
30" x 72"

Seat Height	18.3"
Seat Back Height	34"
Seat Width	17"
Table Height	31"
Weight	280 lbs.

FEATURES

Easy Cleanability

Bleach solutions & hospital-grade cleaners can safely be used for sanitation.

Secure Molded Edge

The molded edge is radiused for comfort and pressure fused to make it permanently fixed, highly sanitary & pick resistant.

Superior Seating

The ergonomic, one-piece, rotationally molded seating is non-absorbent, easy to clean & highly durable.

OPTIONS: *Glide Kit, Bolt-Down Kit, ADA Compliant*



TABLA TABLE COLLECTION

Tabla is a laminated table solution that can add residential touches to lobbies, common areas and any other space that requires aesthetically pleasing and highly durable furniture products. Available in two different sizes, facilities can choose from different laminates helping to humanize environments that may otherwise be institutional in nature.



FINISHES

LAMINATES

KENSINGTON MAPLE WILD CHERRY ASIAN SUN MONTANA WALNUT PALISADES OAK CALCUTTA MARBLE BLACK ALICANTE

PREMIUM BASE

RAVEN



Round Premium
18" & 36" Round

Height	18"
18" Diameter	18"
36" Diameter	36"
Weight	30-86 lbs.



Round Standard
18" & 36" Round

Height	18"
18" Diameter	18"
36" Diameter	36"
Weight	25-75 lbs.



Rectangle Premium

Height	18"
Length	39"
Width	22"
Weight	92 lbs.



Rectangle Standard

Height	18"
Length	39"
Width	22"
Weight	75 lbs.

FEATURES

Comprehensive Construction

An internal rib structure offers additional strength, providing durability that extends beyond the surface.

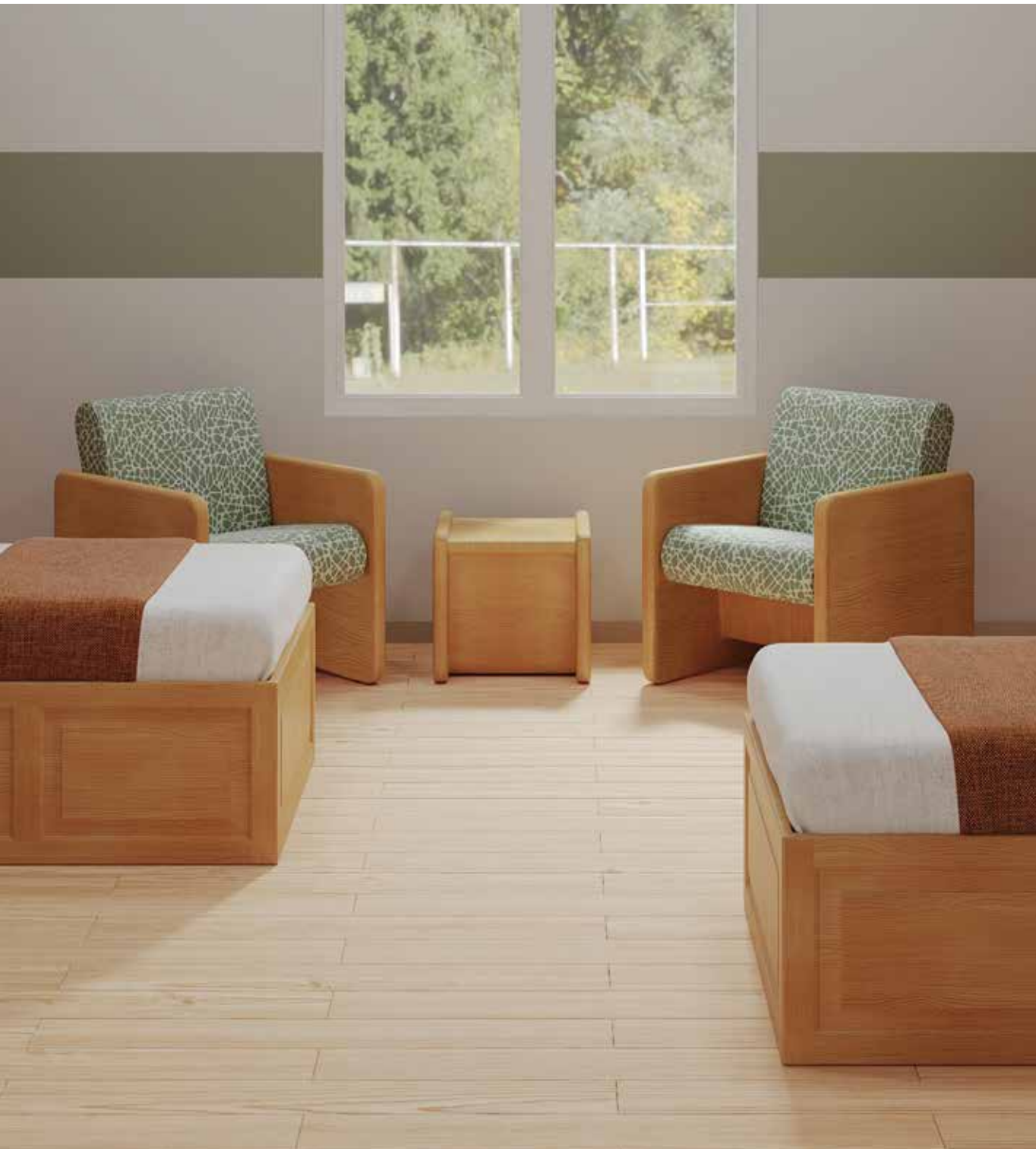
Secure Molded Edge

The molded edges are radiused for comfort and pressure fused to an extra strength top, making it permanently fixed, highly sanitary, and pick resistant.

The Perfect Companion

A variety of shapes, sizes and finishes allow this product to fit seamlessly into any environment.

OPTIONS: Bolt-Down Kit, Ballastable



TORO TABLE

An ideal complementary piece to our Toro Lounge Chair, the Toro Table combines the robust performance of a polymer with the soothing aesthetic of real wood. The natural texture and color striations allow the Toro Table to mimic the comforting nature of a traditional wood table without any of the typical drawbacks – such as chipping, deterioration, and delamination.



FINISHES

COLORS



HARVEST



BISCOTTI



JAVA



Toro
Table

Height	19.2"
Top Width	16.3"
Overall Width	20"
Top Depth	18"
Overall Depth	20"
Weight	18 lbs.

FEATURES

Infection Control

The one-piece, seamless construction is impervious to fluids for superior infection control & easy sanitization.

Recycled Content

Recovered materials have been repurposed to create this product.

TruGrain™ Technology

Designed to mimic the warm, traditional look of natural wood while delivering the superior performance of polymer.

OPTIONS: *Ganging Kit, Bolt-Down Kit, Ballastable*



X-BASE TABLE COLLECTION

Norix® was challenged to design an institutional grade table that defined each person's space and hindered the passing of contraband from one individual to another on the opposite side. Our answer was the popular, rugged X-Base Table with its unique "X" base design. The Molded X-Base Table design details that are molded into the base create visual intrigue and help reinforce a welcoming environment.



FINISHES

TOPS

KENSINGTON MAPLE WILD CHERRY ASIAN SUN MONTANA WALNUT PALISADES OAK CALCUTTA MARBLE BLACK ALICANTE TITANIUM EVOLVE TITANIUM EVOLVE GAMETOP DUOFORM

**DuoForm top only available in 42" Square*

MOLDED BASES

TWILIGHT COVE SIENNA DOVE RAVEN

EXTENDED

CITRUS TRANQUIL MALIBU COBALT WISTERIA LUX IVORY LUX ONYX

**Steel base is only available in Black.* **Extended colors require a minimum of 6 pieces*



DuoForm Top
42" Square

Overall Height	31.3"
42" Square Weight	66 lbs.



Molded Base
36", 42" & 48"

Overall Height	31.1"
36" Sqaure Weight	97 lbs.
42" Round Weight	100 lbs.
42" Square Weight	116 lbs.
48" Round Weight	118 lbs.



Laminate Base
36", 42" & 48"

Overall Height	29.3"
36" Round Weight	126 lbs.
36" Square Weight	139 lbs.
42" Round Weight	142 lbs.
42" Square Weight	162 lbs.
48" Round Weight	164 lbs.

FEATURES

Contraband Resistant
The "X" base design creates four individually defined spaces to mitigate physical contact & hinder the ability to pass contraband.

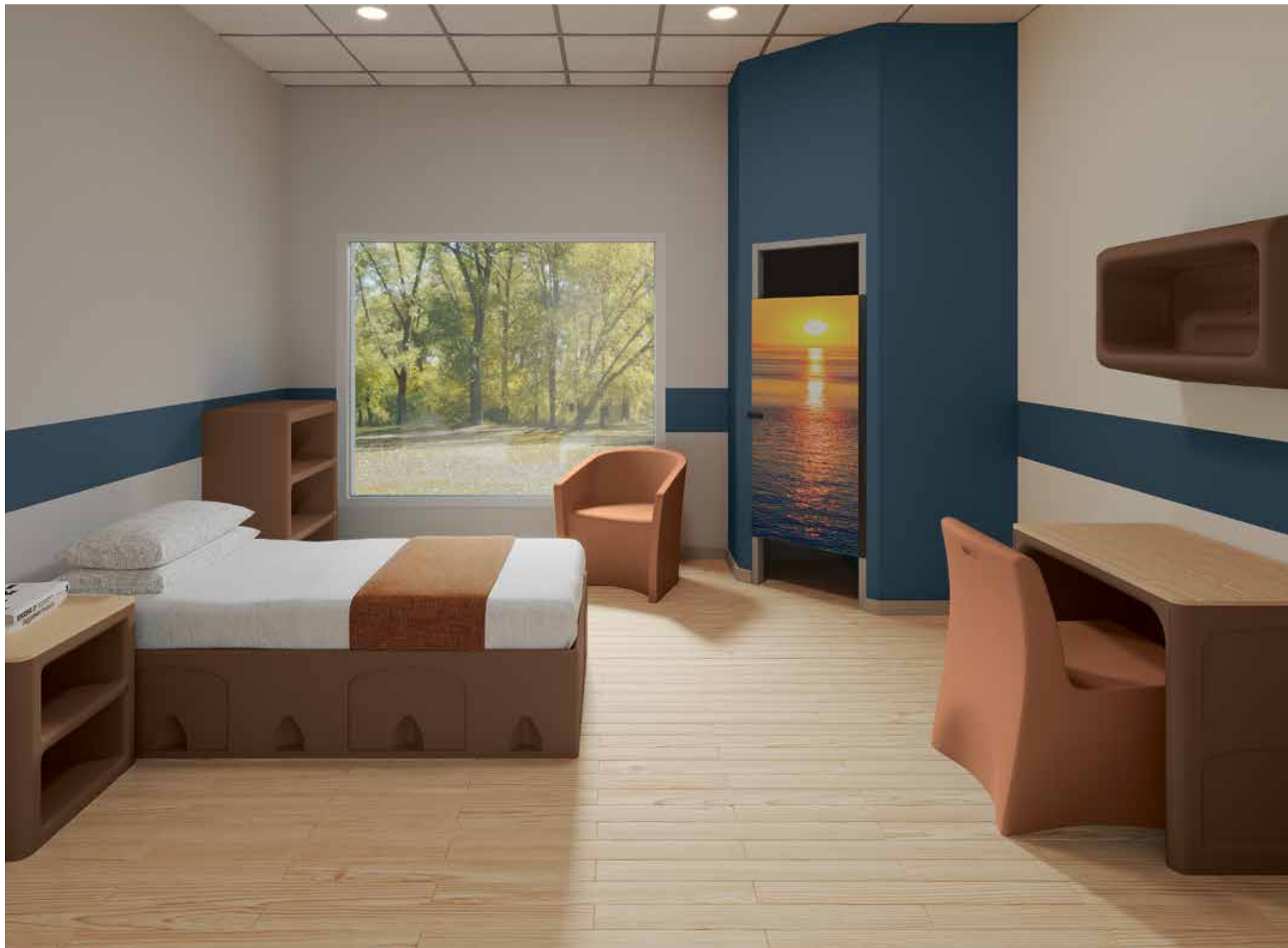
Easy Cleanability
Bleach solutions and hospital-grade cleaners can safely be used for sanitation.

Tamper Resistant
The base & top are attached with Torx secure hardware to mitigate tampering.

OPTIONS: Bolt-Down Kit, Concealment Plate, (DuoForm Top Only), Ballasting available in molded base version only.

Bedrooms







ARCADIAN™ BEDROOM COLLECTION

Arcadian utilizes a unique blend of residential aesthetics and robust durability to form visually pleasing pieces, engineered to endure the rigors of challenging environments. Rotationally molded using a specially formulated, high-impact polyethylene, Arcadian's superior durability is further strengthened by several inverted, internal support ribs and use of concealed, tamper-resistant hardware.



FINISHES

COLORS



TWILIGHT



COVE



SAGE



SAND



SIENNA



DOVE



Platform Bed

Overall Length	82"
Overall Width	38"
Height	16.9"
Bed Deck Size	80" x 36"
Weight	116 lbs.

* Recommended mattress size 36" x 80"



Nightstand

Overall Length	20"
Overall Width	20"
Height	23"
Weight	28 lbs.



Desk

Height	30"
Depth	24"
Width	36"
Weight	75 lbs.



Open Chest

Height	42"
Depth	18"
Width	30"
Weight	70 lbs.



Two Shelf

Height	38.9"
Depth (No Door)	20"
Depth (Door)	21.1"
Width	18"
Weight (No Door)	43 lbs.
Weight (Door)	54 lbs.



Wardrobe

Height	78"
Depth (No Door)	24"
Depth (Door)	24.3"
Width	24"
Weight	140-182 lbs.

FEATURES

Concealed Hardware

The ligature resistant floor anchoring system features concealed, tamper resistant hardware to reduce tampering risks and support a safe, secure environment.

Internal Support Ribs

Inverted, internal support ribs enhance overall strength and eliminate the need for interior foam.

Strength Through Design

The considerate use of contours adds depth, supports overall strength, and contributes to a contemporary feel.

Lockable Personal Storage

Engineered with accommodations for lockable storage.

OPTIONS: Options may vary by product. Please refer to the specification page for a complete list of available features and options.



ATTENDA[®] BEDROOM COLLECTION

The Attenda[®] Collection is designed to provide the strength, safety, and cleanability required for institutional living's daily challenges — in a sleek, contemporary look. The key to Attenda's strength and durability is its advanced construction. Molded-in specially formulated, high-impact, fire-retardant polyethylene, each Attenda product is structurally enhanced for increased strength and durability.



FINISHES

COLORS



TWILIGHT



COVE



SAND



SIENNA



DOVE

DELUXE FINISHES

TOPS



KENSINGTON
MAPLE



WILD
CHERRY



ASIAN
SUN



MONTANA
WALNUT



PALISADES
OAK

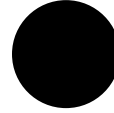
RISER FINISHES



SIENNA



DOVE



RAVEN

*Laminates available on Deluxe Nightstand, Deluxe Open Chest, Desk and Headboard Only.



Platform Bed

ATN101

Overall Length	84"
Overall Width	40"
Height	15.5"
Bed Deck Length	82"
Bed Deck Width	38"
Weight	110-115 lbs.

* Recommended mattress size 38" x 82"



Platform Space-Saver

ATN120

Overall Length	79"
Overall Width	31"
Height	15"
Bed Deck Length	77"
Bed Deck Width	29"
Weight	80 lbs.

* Recommended mattress size 29" x 77"



Platform Space-Saver

ATN150

Overall Length	80"
Overall Width	32"
Height	15"
Bed Deck Length	78"
Bed Deck Width	30"
Weight	85 lbs.

* Recommended mattress size 30" x 79"



Space-Saver With Storage

ATN130

Overall Length	78"
Overall Width	32"
Height	22.6"
Bed Deck Length	76"
Bed Deck Width	30"
Cubby Width	27"
Cubby Depth	18"
Cubby Height	15"
Weight	140 lbs.

* Recommended mattress size 30" x 75"



Sleigh Bed 13"

Overall Length	92.8"
Overall Width	38.5"
Height	25.4"
Surface Height	13"
Weight	125 lbs.

* Recommended mattress size 36" x 80"



Sleigh Bed 18"

Overall Length	92.8"
Overall Width	38.5"
Height	30.4"
Surface Height	18"
Weight	138 lbs.

* Recommended mattress size 36" x 80"



Bed Riser

Width	83.5"
Depth	39.5"
Height	8.5"
Weight	66 lbs.

* Only available for use with ATN101



Bookshelf

Width	31"
Depth	13"
Height	21"
Weight	22 lbs.



Two Shelf

Width	18"
Depth	17"
Height	36"
Total Cubby Volume	2.6 cu ft
Weight	31 lbs.



Three Shelf

Width	27"
Depth	13.8"
Height	53.5"
Total Cubby Volume	4.3 cu ft
Weight	50 lbs.



Four Shelf

Width	27"
Depth	13.8"
Height	68"
Total Cubby Volume	5.7 cu ft
Weight	69 lbs.



Open Chest

Width	30"
Depth	18"
Height (Standard)	42"
Height (Deluxe)	42.8"
Weight	63-76 lbs.

* Available with or without laminate



Nightstand

Width	22"
Depth	22"
Standard Height	23.3"
Deluxe height	24"
Weight	30-33 lbs. lbs.



Floor Mount Desk

Width	35.6"
Depth	23.7"
Height	30.1
Weight	48 lbs.

* Available with or without laminate



Wall Mount Desk

Width	35.5"
Depth	23.7"
Height (No Laminate)	23.8"
Height (Laminate)	24.8"
Weight	45-65 lbs.

* Available with or without laminate



Wardrobe

Width	26"
Depth (No Door)	24"
Depth (Door)	25.5"
Height	78.4
Weight	75-80 lbs.

Headboard



Height	18"
Depth	1.2"
Width	39.5"
Weight	22 lbs.

Restraint Rings

Non-Removable



Overall Width	3"
Overall Height	2"
Overall Depth	0.85"
Weight	0.2 lbs.

* Designed for use with ATN101 Bed only

Restraint Rings

Removable



Ring Width	3"
Ring Depth	0.85"
Ring Height	2"
Block Width	4.4"
Block Depth	2"
Block Height	1"
Weight	1.9 lbs.

Floor Mount Stool



Seat Diameter	12"
Base Diameter	16.5"
Height	16"
Weight	9.5 lbs.

FEATURES

Foam Filled Reinforcement

Platform beds are filled with a rigid polyurethane foam for increased durability & acoustic absorption.

Infection Control

The surface material is chemically resistant to blood, vinegar, urine, feces, salt solutions & chlorine solutions, allowing for easy sanitization & superior infection control.

Ligature Resistant Design

The one-piece, roto-molded design eliminates pass throughs & tie offs, thus reducing ligature risk.



OPTIONS: Options may vary by product. Please refer to the specification page for a complete list of available features and options.



CLARK COMPARTMENT

The Clark Compartment blends evidence-based design with empathy by providing a safe, secure storage space for clothing, literature, or other personal belongings. The recessed shelf design enables staff members to maintain line of sight, mitigates ligature risk and reduces the opportunity to conceal contraband all while providing patients with an increased sense of dignity.



FINISHES

COLORS



TWILIGHT



COVE



CLAY



SAGE



SAND



SIENNA



DOVE



Clark Compartment

Recessed Shelf

Height	45.4"
Width	15.5"
Depth	17"
Smaller Cubby Height	9.56"
Larger Cubby Height	15.6"
Weight	23 lbs.

FEATURES

Compassionate Construction

A thoughtful blend of empathy and evidence-based design that defies stigma by providing residents with a safe storage space for their personal belongings and helping them feel like they belong.

Safe, Secure Storage

The recessed shelf design enables staff members to maintain sight lines, helps mitigate ligature risk and reduces opportunities to conceal contraband.

Seamless Installation

Compatible with both new construction and renovations, this unit fits seamlessly in standard 16" stud spacing.

Flexible Orientation

This unit can be installed multiple directions.



BEDROOMS



PRODIGY[®] BEDROOM COLLECTION

Prodigy[®] features the industry's first wood-look polymer furniture, providing an aesthetically pleasing and safe environment for any bedroom setting. The collection is designed and engineered to overcome the challenge of creating a humane environment without sacrificing safety, security, and long-term performance. Prodigy[®] is at the vanguard of innovation and continues the Norix[®] legacy of leading breakthroughs in behavioral healthcare.



FINISHES

COLORS



HARVEST



BISCOTTI



JAVA



Platform Bed

TruGrain® Technology

Overall Length	82"
Overall Width	38"
Height	18.5"
Bed Deck Length	80"
Bed Deck Width	36"
Weight	130 lbs.

* Recommended mattress size 36" x 80"



Storage Bed

TruGrain® Technology

Overall Length	78"
Overall Width	32"
Height	21"
Bed Deck Length	76"
Bed Deck Width	30"
Weight	120 lbs.

* Recommended mattress size 30" x 75"



Nightstand

TruGrain® Technology

Height	23.5"
Overall Length	20"
Overall Width	20"
Top Cubby Volume	0.86 cu ft
Bottom Cubby Volume	1.28 cu ft
Weight	29 lbs.



Desk

TruGrain® Technology

Height	30"
Overall Length	35.5"
Overall Width	24"
Weight	50 lbs.



Open Chest

TruGrain® Technology

Height	42"
Overall Length	30"
Overall Width	18"
Total Cubby Volume	6.9 cu ft
Weight	55 lbs.



Wardrobe

TruGrain® Technology

Overall Length	24"
Overall Width	24"
Overall Height	78"
Weight	155-200 lbs

* Door options available

FEATURES

Environmentally Responsible

Each piece in this collection is responsibly made using recycled content & is recyclable.

Infection Control

The one-piece, seamless construction is impervious to fluids for superior infection control & easy sanitization.

TruGrain™ Technology

Designed to mimic the warm, traditional look of natural wood while delivering the superior performance of polymer.

OPTIONS: Options may vary by product. Please refer to the specification page for a complete list of available features and options.



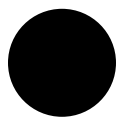
PROTEGE™ BEDROOM COLLECTION

Protégé™ Dorm Furniture offers full steel construction that delivers reliable performance and outstanding value. The design and construction is ideal for transitional housing and dormitory needs. Protégé® steel beds are equipped with fully welded end frames and the entire series is bed-bug resistant due to its material, while complemented by warming wood grain laminate headboards and accents.



FINISHES

STEEL



EBONY

LAMINATE



WILD CHERRY



Bunkable Bed
Steel Furniture

Height	34.9"
Width	39.5"
Length	86.5"
Weight	88 lbs.

* Recommended mattress size 36" x 80"



Double Bunks
Steel Furniture

Height	68.4"
Width	39.5"
Length	86.5"
Weight	182 lbs.

* Recommended mattress size 36" x 80"



Nightstand
Steel Furniture

Height	24.8"
Width	18"
Depth	18"
Weight	38 lbs.



Under Bed Storage
Steel Furniture

Height	17.9"
Width	38"
Depth	18.8"
Weight	98 lbs.



Locker
Steel Furniture

Height	70"
Width	18"
Depth	18"
Weight	95 lbs.

FEATURES

Adjustable Glides

Adjustable floor glides offer floor protection & allow for easy stabilization if placed across an uneven surface.

Strength of Steel

The heavy-duty, all-steel construction is engineered to withstand the rigors of challenging environments.

Bed Bug Resistant

The all-steel construction is naturally cool & relatively dry, offering unsuitable conditions for bed bugs to manifest.

Infection Control

Bleach solutions & hospital-grade cleaners can safely be used for sanitation.

OPTIONS: Adjustable Glide Kit, Headboard & Footboard, Bunk Extension Kit



TITAN[®] BEDROOM COLLECTION

Looking for residential steel dorm furniture that can endure years of intensive-use in your facility's demanding environment? Look no further than the Titan[®] Series from Norix[®] – a complete line of steel case goods that combines functional versatility with the institutional durability of full steel construction.



FINISHES

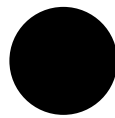
STEEL



KHAKI



BROWNSTONE



EBONY

LAMINATE



WILD CHERRY



PALISADES OAK

EXTENDED



CREAM



LONDON FOG



PEWTER



SLATE



IRISH MOSS



DUSK



MINK

*Extended colors require a minimum quantity order



Panel Base Bed

Steel Furniture

Height	11"
Width	38"
Length	82"
Weight	141-166 lbs.

* Recommended mattress size 36" x 80"



Panel Base Bunkable Bed

Steel Furniture

Height	37.1"
Width	38.5"
Length	86.1"
Weight	209-229 lbs.

* Recommended mattress size 36" x 80"



Panel Base Bunk Bed

Steel Furniture

Height	72"
Width	38.5"
Length	86"
Weight	418-458 lbs.

* Recommended mattress size 36" x 80"



Frame Style Bunkable Bed

Steel Furniture

Height	37"
Width	38.5"
Length	86.2"
Weight	133 lbs.

* Recommended mattress size 36" x 80"



Frame Style Bunk Bed

Steel Furniture

Height	72"
Width	38.5"
Length	86.5"
Weight	266 lbs.

* Recommended mattress size 36" x 80"



Bunkable Lift Deck Bed

Steel Furniture

Height	37"
Width	38.5"
Length	86"
Weight	253 lbs.

* Recommended mattress size 36" x 80"



Nightstand

Steel Furniture

Height	25"
Width	20.5"
Depth	20"
Weight	65 lbs.



2 Drawer Chest

Steel Furniture

Height	18.8"
Width	30.5"
Depth	23.8"
Weight	97 lbs.



3 Drawer Chest
Steel Furniture

Height	29"
Width	30.5"
Depth	23.8"
Weight	111 lbs.



5 Drawer Chest
Steel Furniture

Height	43.2"
Width	30.5"
Depth	23.8"
Weight	145 lbs.



Drawer Locker
Steel Furniture

Height	18.1"
Width	24"
Depth	31.5"
Weight	89-94 lbs.



Pedestal Desk
Steel Furniture

Height	30"
Width	42"
Depth	24"
Weight	115-120 lbs.



Table Desk
Steel Furniture

Height	29.6"
Width	35.6"
Depth	23.7"
Weight	76 lbs.



Single Wardrobe
Steel Furniture

Height	78"
Width	24"
Depth	24"
Weight	168 lbs.



Double Wardrobe
Steel Furniture

Height	78"
Width	36"
Depth	24"
Weight	243 lbs.



Multi-Purpose Unit
Steel Furniture

Height	78"
Width	30"
Depth	24"
Weight	315 lbs.

FEATURES

Bed Bug Resistant

The all-steel construction is naturally cool & dry, offering unsuitable conditions for bed bugs to manifest.

Ergonomic Drawer Pulls

Integrated ergonomic drawer pulls eliminate the need for handles – a potential point of failure & a common issue in long-term durability.

Highly Customizable

A wide range of options make it easy to customize each piece to meet the unique needs of any environment.

Tamper Resistant

Fully welded joints, non-removable drawers & the use of security hardware mitigates tampering risks.





SAFEDOOR® DOOR

SafeDoor® from Norix® Furniture provides a balance of safety and privacy in demanding environments. This unique door hangs with magnetic nylon hinges that attach to metal door frames but collapse with just 20 pounds of force mitigating ligature risk. The high-quality vinyl material is radio-frequency welded over high-density polyurethane foam to withstand abuse. SafeDoor® is impervious to bodily fluids and easy to clean.



PATTERNS



RIVER
STONE



GOLDEN
SUNSET



AUTUMN
WATERFALL



SPRING
BLOSSOM



TROPICAL
BEACH



CASCADING
WATERFALL



TEAK
WOODGRAIN



PINE
WOODGRAIN



SafeDoor

Ligature Resistant Door

Height	58"
Door Width	36"
Hinge Width	2"
Overall Width	38"
Door Thickness	1.5"
Weight	9.5 lbs.

FEATURES

Extreme Durability

Robustly engineered with a high-quality vinyl cover radio-frequency welded over a high-density polyurethane foam core.

Fire-Retardant

Both the polyurethane foam core & vinyl cover are fire-retardant.

Ligature Resistant Design

Magnetic nylon hinges attach to metal door frames but are designed to collapse with just 20 lbs. of force to mitigate ligature risk.

OPTIONS: *Left or Right Hinge*

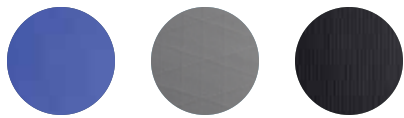


REMEDY[®] MATTRESS COLLECTION

This durable, institutional mattress has the Comfort Shield[®] innovation, including a polyurethane-coated, fire-retardant cover with a radio-frequency welded sealed seam that is guaranteed not to break.



FINISHES



NORIX®
BLUE

SILVER
SECURE

BLACK
MAX



Comfort Shield®
Remedy Norix® Blue

MRB6-2977	29" x 77"
MRB6-3075	30" x 75"
MRB6-3079	30" x 79"
MRB6-3675	36" x 75"
MRB6-3680	36" x 80"
MRB6-3882	38" x 82"
Weight	22-28.5 lbs.

* All mattress sizes are 6" thick



Comfort Shield®
Remedy Silver Secure

MRS6-2977	29" x 77"
MRS6-3075	30" x 75"
MRS6-3079	30" x 79"
MRS6-3675	36" x 75"
MRS6-3680	36" x 80"
MRS6-3882	38" x 82"
Weight	22-28.5 lbs.

* All mattress sizes are 6" thick



Comfort Shield®
Remedy Black Max

MRX6-2977	29" x 77"
MRX6-3075	30" x 75"
MRX6-3079	30" x 79"
MRX6-3675	36" x 75"
MRX6-3680	36" x 80"
MRX6-3882	38" x 82"
Weight	22-28.5 lbs.

* All mattress sizes are 6" thick



Comfort Shield®
Remedy Silver Secure Sealed Wedge

Head Height	10"
Foot Height	2"
Weight	23.5 lbs.



Comfort Shield®
Remedy Blue Sealed Wedge

Head Height	10"
Foot Height	2"
Weight	23.5 lbs.



Comfort Shield®
Remedy Pillow - Norix® Blue

Height	5"
Width	21"
Length	17.5"
Weight	1.5 lbs.



Comfort Shield®
Remedy Pillow - Silver Secure

Height	5"
Width	21"
Length	17.5"
Weight	1.5 lbs.

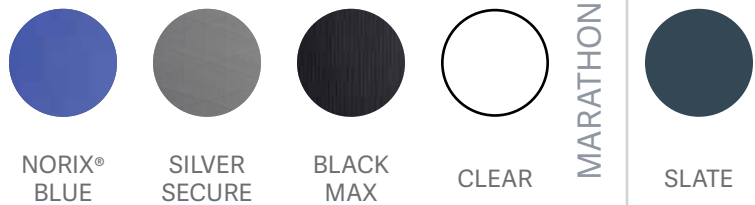


CUSTODY MATTRESS COLLECTION

Custody® Sealed Seam Mattresses feature 100% sealed seams that are radio frequency welded and guaranteed not to break – for enhanced hygiene, security and durability. The mattresses feature double sided pillows and are resistant to fluids and bed bugs.



FINISHES



Comfort Shield®
Custody Norix® Blue

MCB4-2575	25" x 75"
MCB4-2775	27" x 75"
MCB4-3075	30" x 75"
MCB4-3079	30" x 79"
MCB4-3080	30" x 80"
Weight	13-17 lbs.

* All mattress sizes are 4.5" thick



Comfort Shield®
Custody Silver Secure

MCS4-2567	25" x 67"
MCS4-2575	25" x 75"
MCS4-2580	25" x 80"
MCS4-2775	27" x 75"
MCS4-2780	27" x 80"
MCS4-2977	29" x 77"
MCS4-3075	30" x 75"
MCS4-3079	30" x 79"
MCS4-3080	30" x 80"
Weight	11.5-17 lbs.

* All mattress sizes are 4.5" thick



Comfort Shield®
Custody Black Max

MCX4-2567	25" x 67"
MCX4-2575	25" x 75"
MCX4-2580	25" x 80"
MCX4-2775	27" x 75"
MCX4-2780	27" x 80"
MCX4-2977	29" x 77"
MCX4-3075	30" x 75"
MCX4-3079	30" x 79"
MCX4-3080	30" x 80"
Weight	11.5-17 lbs.

* All mattress sizes are 4.5" thick



Comfort Shield®
Custody Clear

MCC5-2575	25" x 75"
MCC5-2775	27" x 75"
MCC5-3075	30" x 75"
Weight	19.2 lbs.

* All mattress sizes are 4.5" thick



Marathon
Custody Mattress

Body Height	4.5"
Pillow Height	8"
Width	25"
Length	75.1"
Weight	75 lbs.

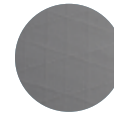
TRANSITIONS MATTRESS COLLECTION

The Comfort Shield® Transitions Mattress is a blend of comfort, cleanability, and lasting value. A compact fiber core offers just the right amount of cushion without the use of inner springs. The breathable vent system repels oil, water, and bodily fluids, and the anti-microbial TPU cover is easy to clean and sanitize. The sealed seams create a barrier to bedbug infestations for high traffic environments.

FINISHES



NORIX®
BLUE



SILVER
SECURE



Comfort Shield®
Transitions Norix® Blue

MQB4-3675	36" x 75"
MQB4-3680	36" x 80"
MQB4-3882	38" x 82"
Weight	16-19 lbs.

* All mattress sizes are 4.5" thick



Comfort Shield®
Transitions Silver Secure

MQS4-3675	36" x 75"
MQS4-3680	36" x 80"
Weight	16-17.5 lbs.

* All mattress sizes are 4.5" thick



DORM MATTRESS COLLECTION

The Comfort Shield® Dorm Mattress are institutional-grade with anti-microbial nylon covers and anti-crevice inverted seams. These dorm mattresses are available in two grade levels: Economy Foam Core construction and a Dual Comfort Foam Encased Innerspring construction. Comfort Shield® Sewn Seam Mattresses complies with current flammability test standards.

FINISHES



NAVY



Comfort Shield®
Dorm Innerspring Mattress

MNE7-3675	36" x 75"
MNE7-3680	36" x 80"
MNE7-5480	54" x 80"
Weight	28-33 lbs.

* All mattress sizes are 7" thick



Comfort Shield®
Dorm Foam Mattress


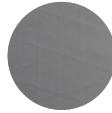

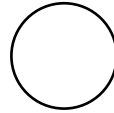

MNF6-3675	36" x 75"
MNF6-3680	36" x 80"
MNF6-5480	54" x 80"
Weight	15-22 lbs.

* All mattress sizes are 6" thick











CUSTODY MATTRESS FEATURES

	 NORIX BLUE	 SILVER SECURE	 BLACK MAX	 NORIX CLEAR	 MARATHON
Construction	Inverted RF Welded Sealed Seam	Inverted RF Welded Sealed Seam	Inverted RF Welded Sealed Seam Reinforced with Security Stitching	Inverted RF Welded Sealed Seam	Seamless Molded Mattress
Core	11 oz/sq ft Densified Polyester	11 oz/sq ft Densified Polyester	11 oz/sq ft Densified Polyester	15 oz/sq ft Polyethylene Air-String	Flexible Polyurethane Foam
Cover Material	Polyurethane coated Polyester	Polyurethane coated Polyester	Three-ply Polyurethane coated cover	TPU coated Polyester	Roto-molded 200mils Vinyl
Integrated Pillow	●	●	●	●	●
Rip-Stop Cover		●	●	●	
Fluid Resistant	●	●	●	●	●
Bed Bug Resistant	●	●	●	●	●



MATTRESS FEATURES

	 TRANSITIONS NORIX BLUE	 DORM FOAM	 DORM INNER SPRING	 REMEDY NORIX BLUE	 REMEDY SILVER SECURE	 REMEDY BLACK MAX
Construction	Inverted RF Welded Sealed Seam	Inverted Sewn Seam	Inverted Sewn Seam	Inverted RF Welded Sealed Seam	Inverted RF Welded Sealed Seam	Inverted RF Welded Sealed Seam Reinforced with Security Stitching
Core	11 oz/sq ft Densified Polyester	1833 ILD Polyurethane Foam; 1.8 pcf	Dual comfort PU convoluted foam (1.35/1.5 pcf) with steel innerspring	1833 ILD Polyurethane Foam; 1.8 pcf	1833 ILD Polyurethane Foam; 1.8 pcf	1833 ILD Polyurethane Foam; 1.8 pcf
Cover Material	Polyurethane coated Polyester	210 Denier Oxford Nylon with Polyurethane coating	210 Denier Oxford Nylon with Polyurethane coating	Polyurethane coated Polyester	Polyurethane coated Polyester	Three-ply Polyurethane coated cover
Integrated Pillow				Optional	Optional	Optional
Separate Matching Pillow Available	●			●	●	
Rip-Stop Cover					●	●
Fluid Resistant	●	●*1	●*1	●	●	●
Bed Bug Resistant	●			●	●	●





KIDS FURNITURE COLLECTION

Kids are full of energy – and they need furniture that can keep up! From climbing, jumping and constant movement to the inevitable spills and messes, children put furniture to the test every single day. That's why our kids' furniture is designed with both resilience and practicality in mind. With bright colors and innovative designs, this entertaining and engaging line of kids' furniture is kid tested, and kid approved.



FINISHES

COLORS



TWILIGHT



COVE



CLAY



SAGE



SAND

EXTENDED



CITRUS



TRANQUIL



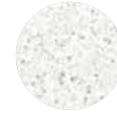
MALIBU



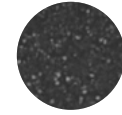
COBALT



WISTERIA

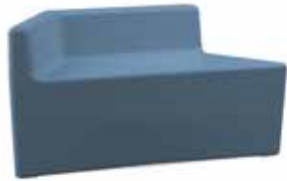


LUX IVORY



LUX ONYX

*Extended colors require a minimum of 6 pieces



A-Maze

Seat Height	14.3"
Overall Height	22"
Width	17.5"
Length	43"
Weight	22 lbs.



Elle Table

Height	22.4"
Width	55.2"
Depth	26"
Weight	39 lbs.



Elle Chairs

Seat Height	13"
Overall Height	19.5"
Width	22.4"
Depth	15.1"
Weight	7 lbs.



Hex-It Large

Height	13"
Width	26"
Depth	22.5"
Weight	12 lbs.



Hex-It Small

Height	13"
Width	20.5"
Depth	18"
Weight	8.6 lbs.

FEATURES

Designed for Safety

Designed with no holes or moving parts to safeguard against potential injury.

FDA Approved

This product meets strict health based criteria for VOC emissions and total chemical emissions, earning FDA approval.

Playful Design

Designed to look like playful abstraction of an elephant with a cute trunk, wiggly tail & floppy ears, it can serve as a fun distraction in potentially stressful environments.

OPTIONS: Options may vary by product. Please refer to the specification page for a complete list of available features and options.

DURAVISION MIRROR

DuraVision™ Mirrors from Norix® are designed to exceed the breakability and tamper resistance of any other product on the market, making them an ideal solution for the challenging conditions found in correctional and mental health facilities. Full, half and quarter dome mirror options enable staff to observe blind corners and intersections without putting themselves or others in harm's way.

FINISHES

FRAME



ALMOND



18 & 24 Full Dome
Convex Mirror

Mirror Diameter	18" / 24"
Frame Diameter	20" / 26"
Depth	6.75" / 8.5"
Weight	6.2-9.8 lbs.



18, 24 & 36 Half Dome
Convex Mirror

Length	20" / 25.8" / 37"
Height	10" / 13" / 19"
Depth	5.5" / 7" / 7.5"
Weight	5.8-13.9 lbs.



12 & 18 Quarter Dome
Convex Mirror

Length	19" / 27"
Height	9.5" / 13.4"
Depth	13.5" / 19"
Weight	7.2-9.5 lbs.



Rectangle
Wall Mirror

Mirror	14" x 18"
Frame	16" x 20"
Depth	0.25"
Weight	6.8 lbs.



Circle
Wall Mirror

Mirror Diameter	14"
Frame Diameter	16"
Depth	0.25"
Weight	4.6 lbs.



IRONMAN® WALL MIRROR

One-piece stainless steel with a highly polished finish. Mount flush to the wall or with an optional backer plate for added security.



Small
Wall Mirror

Mirror Height	9.5"
Overall Height	11.3"
Mirror Width	7.8"
Overall Width	9.5"
Depth	0.25"
Weight	1.4 lbs.



Large
Wall Mirror

Mirror Height	15.6"
Overall Height	17.3"
Mirror Width	9.6"
Overall Width	11.3"
Depth	0.25"
Weight	2.6 lbs.



ADA
Wall Mirror

Mirror Height	36.3"
Overall Height	38"
Mirror Width	9.5"
Overall Width	11.3"
Depth	0.25"
Weight	5 lbs.

POLYCARBONATE WALL MIRROR

The Polycarbonate Mirror is engineered to offer outstanding strength and impact resistance, making it an ideal accessory for preserving safety and security.



Small
Wall Mirror

Height	11.3"
Width	9.5"
Depth	0.25"
Weight	1 lb.



Large
Wall Mirror

Height	17.3"
Width	11.3"
Depth	0.25"
Weight	2 lbs.



STORAGE OPTIONS

The **Tank Box** property storage bin is made of specially formulated structural plastic. This material is twice as rigid as steel, resistant to impact and wont rust.

The **Citadel**® Property Storage Bin has rounded edges for enhanced safety, security and structural integrity.

SafeStore is a three-ply polyurethane construction that is highly puncture resistant, inhibits tearing and offers resistance to fluids, cracking, peeling, abrasion and delamination.



FINISHES



BLACK



Tank Box
Legal/Letter

Box Width	20.3"
Box Depth	13.9"
Box Height	11"
Lid Width	20.8"
Lid Depth	14.5"
Lid Height	1.25"
Box Weight	9.5 lbs.
Lid Weight	3.5 lbs.



Tank Box
Standard

Box Width	22.9"
Box Depth	17.4"
Box Height	8.5"
Lid Width	23.1"
Lid Depth	18"
Lid Height	1.25"
Box Weight	9 lbs.
Lid Weight	4 lbs.



Tank Box
Large

Box Width	22.9"
Box Depth	17.4"
Box Height	12.5"
Lid Width	23.1"
Lid Depth	18"
Lid Height	1.25"
Box Weight	12 lbs.
Lid Weight	4 lbs.



Tank Box
X-Large

Box Width	33.9"
Box Depth	22.9"
Box Height	11"
Lid Width	34.5"
Lid Depth	23"
Lid Height	1.25"
Box Weight	22.5 lbs.
Lid Weight	8 lbs.



Citadel
Property Storage

Box Width	25.4"
Box Depth	17.5"
Box Height	12.9"
Lid Width	26"
Lid Depth	18.2"
Lid Height	2"
Box Weight	6.5 lbs.
Lid Weight	4 lbs.



SafeStore
Flexible Storage

Open Chest	11" x 14" x 9"
Nightstand	11" x 14" x 6.5"
3 & 4 Shelf	17" x 10" x 11"
Trash Can	10" x 5" x 11"
Weight	1 lb.

STORAGE

WASHROOM ACCESSORIES COLLECTION

Designed for safety and engineered to endure, our washroom accessories are crafted to excel in challenging environments where performance and peace of mind matter most.

FINISHES



STAINLESS STEEL



Toilet Paper Holder
Front Mount

Height	7"
Width	7"
Depth	4.5"
Opening Diameter	5.4"
Weight	2 lbs.



Recessed Shelf

Opening Height	5"
Overall Height	7.5"
Opening Width	16"
Overall Width	18"
Weight	7 lbs.



Clothes Hooks
1 & 4 Ball Hooks

Single Height	4"
Single Width	4"
Single Depth	2.7"
4 Hook Dimensions	6.5"H x 18"W x 2.7"D
4 Hook Shelf Dimensions	12"H x 18"W x 9"D
Single Weight	.8 lbs.
4 Hook Weight	4 lbs.
4 Hook Shelf Weight	10.5 lbs.



Towel Hooks
1 & 4 Hooks

Single Height	5"
Single Width	5"
Single Depth	1.3"
4 Hook Dimensions	5.5"H x 18"W x 1.3"D
4 Hook Shelf Dimensions	11"H x 18"W x 8"D
Single Weight	2 lbs.
4 Hook Weight	5.5 lbs.
4 Hook Shelf Weight	14.5 lbs.



ADA Shower Seat
Recessed Seat

Height	25.9"
Width	36.3"
Depth	25.9"
Weight	85.5 lbs.



Security Grab Bar
Straight & L Shaped

Height	3.1"
Depth	3"
18" Straight	2.5 lbs.
24" Straight	3.7 lbs.
36" Straight	5.2 lbs.
42" Straight	5.9 lbs.
48" Straight	6.9 lbs.
18" x 33" L Shaped	8 lbs.
38" x 56" L Shaped	15 lbs.

DETENTION FURNITURE COLLECTION

Our detention furniture combines uncompromising strength with refined design to deliver safe, tamper-resistant solutions that elevate security while supporting environments built for comfort, dignity, and long-term performance.

FINISHES



STAINLESS
STEEL



Ironman Double
Welded Bunk

Height	52"
Width	27.6"
Length	80.6"
Weight	260 lbs.

* Standard size recommended mattress is 27" x 80"



Ironman Single
Welded Bunk

Height	16"
Width	27.6"
Length	80.6"
Weight	120 lbs.

* Standard size recommended mattress is 27" x 80"



Ironman Wall Mount
Welded Bunk

Height	13"
Width	29.3"
Length	80.3"
Weight	130 lbs.

* Standard size recommended mattress is 27" x 80"



Cuff Bench

48" Bench Dimensions	48"L x 18"D x 18"H
60" Bench Dimensions	60"L x 18"D x 18"H
72" Bench Dimensions	72"L x 18"D x 18"H
96" Bench Dimensions	96"L x 18"D x 18"H
Weight	70-115 lbs.



Floor Mount Stool

Slammer Stone and Stainless Steel Seat

Slammer Stone Height	18.5"
Slammer Stone Base Width	6"
Slammer Stone Diameter	13"
Stainless Steel Height	18"
Stainless Steel Base Width	6"
Stainless Steel Diameter	12"
Weight	14 lbs.



Stack-A-Bunk

Standard and XL Bed

Height	8.375"
Width	32"
Standard Length	75.5"
XL Length	82.5"

* Standard size recommended mattress is 25" x 67"

* XL size recommended mattress is 25" x 75"

DETENTION

DETENTION ACCESSORIES

Our **Pass Hopper** is cut, formed and welded stainless steel assembled to fit countertop, window or wall openings. Steel and stainless steel on exposed surfaces. #4 finish stainless steel.

The stainless steel **Package Pass** has interconnected doors that operate like a sally port. One door must be closed before the other can be opened. Vision panel in rear door allows operator to view contents of the unit.

The **Speaking Port** is a 6" diameter cast stainless steel port provides natural voice transmission. Level III bullet-resistant.

Keep your officer's pistols in our steel cabinet **Pistol Locker**. Monitor the cabinet if you want to, but the solid construction will convince you that supervision is an option.

FINISHES



STAINLESS STEEL



Package Pass

Height	18.6"
Width	18.6"
Depth	16.3"
Weight	70-92 lbs.

** Polycarbonate or Stainless Steel Door available.*



Pass Hopper

Height	12.5"
Width	16"
Depth	7.8"
Weight	47 lbs.



Pistol Locker

Opening Height	8.5"
Overall Height	33.5"
Opening Width	15.5"
Overall Width	39"
Weight	140 lbs.



Speaking Port

Diameter	6"
Weight	5 lbs.



NORIX® IS COMMITTED TO INNOVATE SAFE SURROUNDINGS FOR OUR CUSTOMERS, A NURTURING ENVIRONMENT TO OUR EMPLOYEES, AND TO CREATE A POSITIVE IMPACT ON OUR COMMUNITY.

OUR HEADQUARTERS IS THE FOUNDATION
FOR THIS, WITH A SUSTAINABILITY-FIRST
DESIGN.



NORIX

Interested in our products?

Call us to schedule a tour of our showroom:
630-231-1331

One Innovation Drive, West Chicago, Illinois 60185
Phone: 630-231-1331 / Toll Free: 800-234-4900 / Fax: 630-231-4343
Printed 4/26 furniture@Norix.com ©2026 Norix® Group, Inc.

Norix.com

NORIX[®]

